



The Princess Margaret Hospital Foundation  
Conquer Cancer In Our Lifetime

2011 Report to Our Donors

Building  
momentum  
in personalized  
cancer  
medicine.

# Cancer medicine needs to get more personalized

A Message from Dr. Mary Gospodarowicz  
and Dr. Ben Neel

In the popular TV dramas CSI and Criminal Minds, the word ‘profiling’ comes up a lot. When the investigators nail the DNA or behavioural profile, the job of catching the bad guys becomes more ‘targeted’—they know specifically who they are looking for. Profiling is playing an ever increasing role in cancer medicine as well. At The Princess Margaret, we want our patients to have the most effective treatment for their particular disease, which requires the use of new molecular profiling technology to find out more about their individual tumour.

We’ll be using the term more and more often when we talk about cancer treatment here at The Princess Margaret. We are excited to be playing a world-leading role in building the foundation for this new approach. Personalized cancer medicine focuses on using a patient’s genetic information to more precisely diagnose their cancer and determine its prognosis, and to select treatments most likely to benefit them specifically.

As new targeted drug therapies become available, our challenge is to understand why a drug works well for some cancer patients, but has limited effects on others. We believe the answer lies in the genetic anatomy of each tumour, and, with your help, we plan to accelerate the molecular profiling of patient tumours at The Princess Margaret.

Molecular profiling provides physicians with a very specific ‘blueprint’ of each tumour. A treatment plan can then be personalized to target the genetic abnormalities that caused the disease in the first place. With this approach, we can treat the right patient with the right drug, and, just as importantly, avoid treating patients with drugs that will not be effective against their particular tumour. This is especially important if the treatment is grueling and potentially toxic.

In addition to molecular profiling, we are personalizing cancer medicine in other important ways:

- » Applying new imaging technology that allows surgeons and radiation oncologists to see a patient’s tumour more clearly
- » Developing immunotherapies that activate or re-activate a patient’s own immune system to kill tumours
- » Assisting patients in managing their disease symptoms and individual treatment complications through psychosocial oncology and survivorship programs

Our mission to CONQUER CANCER IN OUR LIFETIME requires us to aggressively pursue and lead in these promising new areas of cancer medicine, and we would not be a world leader without your support.





Dr. Mary Gospodarowicz,  
Medical Director

Dr. Ben Neel,  
Research Director



---

# Conquer

Cancer In Our

# Lifetime

# Our donors are doers!

A Message from the President & CEO  
and the Chairman of the Foundation Board



Paul Alofs  
President & CEO

John H. Bowey, FCA  
Chairman

It's truly amazing what the generosity and 'can-do' spirit of our donors has accomplished in the past year. In this report, you will read about the new *Conway Chemotherapy and Transfusion Centre*, *The Wallace McCain Centre* and the *Al Hertz Centre for Supportive and Palliative Care*—three new facilities that enable the hospital to deliver on patient-centred care in important new ways.

Karyn Drewnowsky and Pat Kay climbed Mount Kilimanjaro and raised \$87,000 for the *Pencer Brain Tumor Centre* at The Princess Margaret, and Telus, with their 'Go Pink' campaign, expanded the capacity of *The Gattuso Rapid Diagnostic Centre* through the purchase of additional digital mammography equipment.

- » A record 10,000+ Dove campaign supporters honoured hospital staff and loved ones, and raised \$1 million
- » Over 150 supporters stepped up to organize their own Special Event in support of The Princess Margaret, raising a total of \$6 million
- » 4,623 participants in the *Shoppers Drug Mart Weekend to End Women's Cancers* raised \$11.1 million, and
- » 4,108 cyclists riding from Toronto to Niagara Falls in *The Enbridge Ride to Conquer Cancer* raised \$17.9 million

These numbers and these stories demonstrate with gusto the collective passion and drive of so many to CONQUER CANCER IN OUR LIFETIME. On behalf of all the scientists, doctors, nurses, therapists, administrative and support staff at The Princess Margaret, thank you, and be assured that your donation is accelerating the breakthrough research here at The Campbell Family Cancer Research Institute.

In the message from our hospital and research leaders—Dr. Mary Gospodarowicz and Dr. Ben Neel—they have shared how we are leading the way in a new approach to cancer medicine thanks to our improved understanding of how cancer begins and behaves. Personalized cancer medicine—the right treatment for the right patient at the right time—is at hand.

As one of the top 5 cancer research centres in the world, The Princess Margaret has the responsibility to improve the standard of care for cancer patients across the country. We believe that investments made now in important areas like molecular profiling of tumours will save more lives and significantly improve the quality of care. We will soon be initiating a new campaign to raise the funds needed to build out the key pillars for this new approach to cancer medicine, and we hope we can continue to count on your support.



# Long-term support from the Campbell Family fuels a culture of research excellence

World leaders in any field are attracted to places where excellence is the starting point, where innovation is expected, and where collaboration is assumed. This is the culture that has been cultivated throughout The Princess Margaret, and that is why we are able to attract and retain the top scientific minds and clinician researchers that are needed to unravel the complexities of cancer.

Over the last many years, the Campbell Family has generously donated \$55 million in order to build a world-class research environment for cancer medicine in Canada. The research institute established in their name—The Campbell Family Cancer Research Institute—has the depth, breadth and leadership needed for innovation and success.

Dr. Tak Mak, one of the world's most gifted scientists, continues to lead a team that is finally figuring out how cells make the

transition from healthy and controlled to rogue and malignant. Dr. Ben Neel, Director of the Institute and an international expert in cell signaling, is recruiting top talent in critical areas including epigenetics, drug discovery and immunotherapy to find and exploit the Achilles heel of different cancers.

With current estimates indicating 40 percent of women and 45 percent of men will face some kind of cancer diagnosis, we must accelerate our mission to CONQUER CANCER IN OUR LIFETIME. Thanks to the long-term financial commitment from the Campbell Family, we are able to maintain a strong confidence in meeting our goal.

Deepest appreciation to Linda, Gaye, Susan and the late Audrey Campbell for providing this strong foundation on which we are improving cancer medicine for Canadians and the world.



THE CAMPBELL FAMILY BUILDING



Campbell  
Family  
Cancer  
Research  
Institute



Princess Margaret  
Hospital

520



# A major re-engineering of chemot

The new *Conway Chemotherapy and Transfusion Centre* delivers a significantly enhanced experience for patients and their families, plus a much-improved work environment for staff

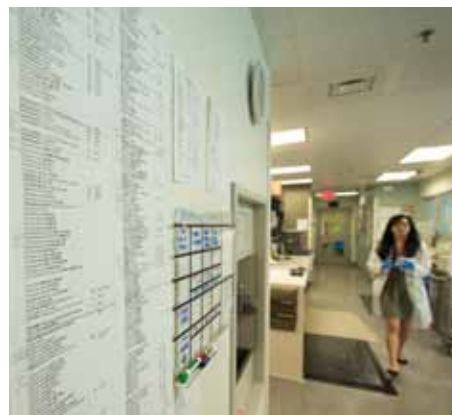
The new *Conway Chemotherapy and Transfusion Centre* is named in honour of Dr. Geoffrey R. Conway. Dr. Conway, a former patient at PMH, was a communications visionary and one of the pioneers in the development of Canadian cable television. After graduating with his Doctorate in Business from Harvard University, Dr. Conway founded Trillium Cable and then CUC Broadcasting, Ltd. He built the largest microwave system in Eastern Canada, developed extensive cable television systems throughout Ontario, and acquired a number of popular radio stations. Dr. Conway also created YTV Canada, Inc., one of Canada's most popular and successful specialty television channels.

His family believes that the new chemotherapy and transfusion centre that bears his name is a reflection of Geoff Conway's forward-thinking, careful planning, and 'visioning'. The goal was to create the best facility of its type in North America—to serve patients and their families during treatment, to increase efficiency, and to provide the staff with the best possible work environment to do their important life-saving work.

The Conway family and the Dr. Geoffrey R. Conway Memorial Foundation insisted that the *Conway Chemotherapy and Transfusion Centre* be consistent with the world-class reputation of the Princess Margaret Hospital.

The Centre will be the largest in North America, currently serving 24,000 patients, and will be expanded to serve up to 35,000 patients in coming years. The Conway Foundation has contributed \$6.5 million toward the cost of this new facility.

Planning began in 2006 with visits to several leading facilities around the continent. Tours and interviews with staff and administrators equipped the PMH planning team with new ideas, recommendations, best practices, and a good sense of what was possible. In addition, research specialists from a leading graduate school of business conducted focus groups with chemotherapy



View [www.pmf.ca/onlinereport2011](http://www.pmf.ca/onlinereport2011) for video

# therapy preparation and delivery

patients to determine their priorities for a high quality patient experience.

The Princess Margaret is a very active research hospital, with one out of every four new patients participating in a clinical trial or study. It was critical to integrate the pharmacy into the Centre to support the clinical trials and mainstream treatments each patient receives. Work space for pharmacy staff had to be allocated and environmental controls established to enhance the safety of patient medication preparation. Pharmacy preparation for future cancer treatments, which will include viruses and other biologics, was also given careful consideration. This required the design of an isolation room

for the safe preparation of these new treatments.

The final phase of the project will see the installation of a first-in-Canada robotic device which will automatically and accurately prepare intravenous syringes and bags, maximizing safety and efficiency for the pharmacy technician and the patient.

Patient and staff satisfaction has increased with the re-design of patient care areas that facilitate more social contact for patients and their families as well as areas that offer more privacy. The sightlines for staff to monitor patients have been dramatically improved over the previous centre.

Dedicated patient education and counseling areas are available for the first time. Colours, lighting, transparent walls and other calm-inducing features are also incorporated into the facility. The response from patients as well as staff and physicians has been uniformly positive.

The Dr. Geoffrey R. Conway Foundation extends its thanks for the contribution to the Centre from the directors and shareholders of CUC Broadcasting Ltd.

The Centre will be completed by December 2011 and will be able to provide over 30,000 chemotherapy treatments in 2012.



# Generous gift from Wallace and Margaret McCain paves the way for earlier diagnosis of pancreatic cancer



The obituary for the late Wallace McCain included one of his well-known quotes: "I liked making money, but I love giving it away even more." A generous man all his life, Wallace, together with his wife of 56 years, Margaret, donated millions and millions of dollars to organizations addressing issues and challenges which they felt were important.

Because he was personally affected by pancreatic cancer, Wallace came to appreciate how lethal the disease is, largely because it is so difficult to detect in its early stages when it can be treated more successfully. He also did some fact checking and determined that the pancreatic cancer research program at The Princess Margaret, headed by Dr. Malcolm Moore, is internationally recognized with active studies in cancer genetics, surgical therapy and new drug development.

The pledge of \$5 million from the McCains will allow Dr. Moore and his team to fast-track many aspects of their program.

Dr. Moore, who is also Chief of Medical Services at The Princess Margaret, and was Wallace's medical oncologist while he was being treated, will serve as director of *The Wallace McCain Centre*. "Wallace McCain was a visionary man who took advantage of good timing and opportunities to grow his family's business. For the benefit of people who will face pancreatic cancer in the future, he also saw that a large investment in pancreatic cancer research was needed now. At The Princess Margaret, we will work diligently to take advantage of this opportunity and ensure the results that Wallace was hoping for."

## Ramping up quickly

*The Wallace McCain Centre opens in record time*

This year it is estimated that 4,000 people will be newly-diagnosed with pancreatic cancer in Canada. That compares to 7,100 new diagnoses of bladder cancer and 22,500 cases of colorectal cancer. However, 3,850 people will also die of pancreatic cancer. The vast majority of people diagnosed with pancreatic cancer do die from it.

The gift from Wallace and Margaret McCain will be put to use quickly with the goal of changing this outlook for patients.

First, the collection of tissue from pancreatic cancer patients will be expanded, enabling researchers to step up the search for bio-markers—indicators of the disease—that can be found in blood or urine. The McCain gift will also allow the hospital to do more sophisticated molecular analyses of the pancreatic tumours. Physicians believe this is the next major leap forward in cancer treatment. Knowing the genetic mutations that gave rise to a tumour means that doctors know much more about a patient's specific disease and can tailor the treatment accordingly.

The most advanced diagnostic equipment can now be purchased—sophisticated imaging equipment that can detect small pancreatic tumours more reliably, plus establishment of a system that will allow biopsies to be performed more quickly on site. With this equipment in place, all the required tests and evaluation can be done within days rather than the weeks to months it currently takes.

# Boehringer Ingelheim supports personalized lung cancer research program



It is always a ringing endorsement of the work going on at The Princess Margaret when internationally-leading corporations want to collaborate and provide their support. Boehringer Ingelheim is one of the world's top pharmaceutical companies

with a corporate culture focused on 'leading and learning'—something that mirrors the culture of The Princess Margaret. As a company involved in new drug development for lung cancer—still the number one cause of cancer-related death in the western world—Boehringer Ingelheim has followed the work of Drs. Frances Shepherd and Ming Tsao and their teams closely, and has great respect for the progress they have made in improving treatment options for lung cancer patients.

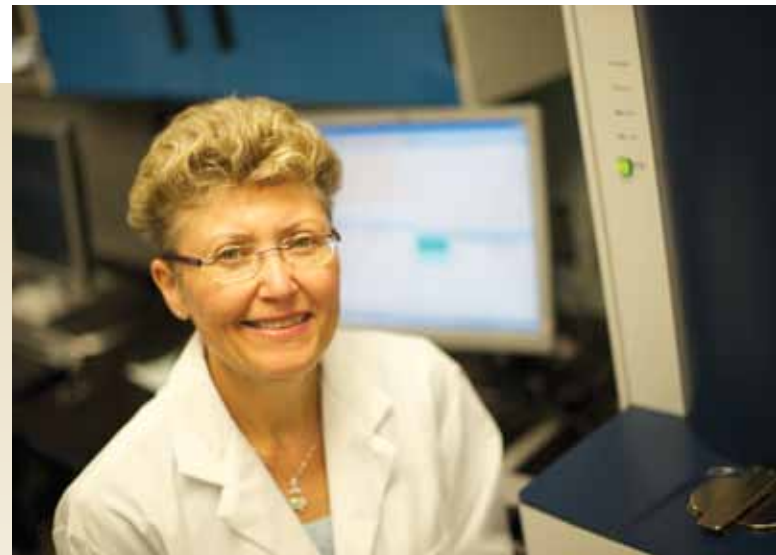
Dr. Shepherd's top priority last year was to introduce molecular profiling into the hospital's lung cancer program, and Boehringer Ingelheim understood the value of this new diagnostic approach. The company stepped up with an Innovation Award which allowed the hospital to pursue that goal. With a genetic sequencing facility and trained staff in place, the diagnosis and treatment of each new lung cancer patient will include the generation of a molecular profile that identifies the genetic mutations in each patient's individual cancer. Tumour tissue from each patient also will be banked for research, and the associated molecular profiles will be studied to identify new mutations and to track response to treatment.

This is an excellent example of the partnerships in place at The Princess Margaret between accomplished researchers and industry, and it is this type of cooperation that enables paradigm shifts towards personalized cancer medicine.

## Producing a more informative 'picture' of a tumour

Oncologists have suspected for some time that a percentage (potentially a high percentage!) of their cancer patients are not benefitting from the drug therapy they are receiving. Drug therapy for all lung cancer patients or for all colon cancer patients has been similar, if not identical, until the last decade. Thanks to hundreds of clinical studies, we have had some good success in segmenting the various types of cancer more specifically as we identify 'biomarkers' or mutations that distinguish one cancer from another. Today we have identified a number of markers—EGFR, KRAS, HER2—to name a few, and physicians now know that the absence or presence of these markers is highly indicative of a patient's likelihood of responding to specific drug therapies.

Dr. Suzanne Kamel-Reid is the Head of Laboratory Genetics and Director of Molecular Diagnostics at University Health Network (which includes The Princess Margaret), and she explains, "While the list of reliable markers is fairly small today,



we expect considerable growth in this area over the next decade as more effective technology is now available to efficiently produce a detailed molecular profile of a tumour." Dr. Kamel-Reid is also Co-Chair of the Molecular Oncology Advisory Committee for Cancer Care Ontario. Knowing the biomarkers and mutations in each tumour—and building our database of understanding of which drugs work best for which mutation—means cancer therapy will continue to get more personalized and more effective.





## “Be that example”

Jamie Bras had a wonderful start in life. He grew up with a father who loved helping other people. “He had a remarkable reputation for just being there for everybody who needed him,” says Jamie. His father, Robert Bras, continues to help people to this day thanks to the legacy he began before succumbing to gallbladder cancer ten years ago.

When Robert asked his doctors, “What can we do to bring this disease to its knees?”, their answer was to invest in new drug development. And so, with a generous \$3.5 million gift, *The Robert and Maggie Bras and Family New Drug Development Program* was created to speed up the availability of promising new drugs to patients at The Princess Margaret.

“Once cancer spreads within the body, drug therapy is the only type of treatment that is effective,” explains Dr. Malcolm Moore, Head of Medical Oncology and Hematology and Director of *The Robert and Maggie Bras and Family New Drug Development Program*. “But cancer is complex, and we have to learn why one patient responds well to a promising new drug, while another patient doesn’t respond at all.”

Jamie, his wife Leah and son Robert have just given their own gift of \$257,000 to support the program that Robert created. “One of the goals of our gift, in my mind, is to ‘be that example’. Whatever it can do to raise the level of involvement of everybody...that is a benefit I would like to see.”

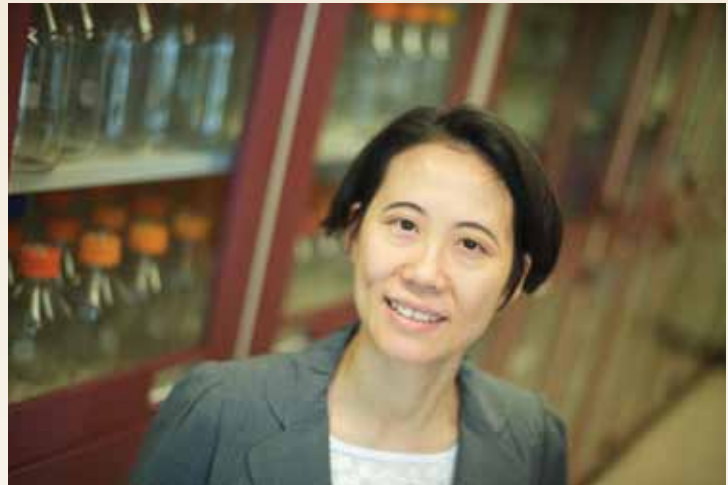
View [www.pmfh.ca/onlinereport2011](http://www.pmfh.ca/onlinereport2011) for video

## Sharp-shooting drugs that hunt down cancer cells wherever they have spread

Surgery and radiation are highly successful types of treatment for cancer when it is contained to one area, but for cancer that has spread beyond the primary site, drug therapy (often called systemic therapy) is really the only effective type of treatment.

There is a new class of cancer drugs—targeted drugs—and each drug is developed to key on specific molecular characteristics discovered about each kind of cancer. The best known example today is the drug Herceptin that targets a protein that is ‘over expressed’ in women with HER2 positive breast cancer. By looking only for cells over expressing this protein, the drug can locate HER2 positive breast cancer cells that have spread to other parts of the body and destroy them.

Dr. Lillian Siu is a co-director of *The Robert and Maggie Bras and Family New Drug Development Program* and a renowned physician specializing in the testing of new drugs that have never been used in humans before. She is anxious to help find more successful drug therapies like Herceptin.



Under the leadership of Dr. Ben Neel, Research Director of The Campbell Family Cancer Research Institute, the expertise and the technology have been put in place at The Princess Margaret to ‘de-code’ cancers to find out the culprit genes involved in their growth and spread. Dr. Siu and her colleagues are now conducting pilot research studies to evaluate how best to utilize this new knowledge to direct patients to the systemic therapy that they are most likely to benefit from (and to avoid therapies that they are least likely to benefit from). The vision of personalized cancer medicine is clear—with more precise molecular diagnostic information about a patient’s tumour, cancer treatment can be tailored and targeted to their individual disease for optimal results.

# No ordinary Joe ... one extraordinary event

In October of 2010, we had to say good-bye to a dear friend and supporter of The Princess Margaret, Joe Finley. All who knew Joe were humbled by the courage he showed in his battle with cancer, and many had the privilege to run, swim or cycle alongside him and witness his passion and commitment to conquering cancer.

Following aggressive treatment for his nasal pharyngeal cancer that spread to his lungs, Joe fulfilled a lifelong ambition by completing a triathlon in August 2006. That experience gave him such a huge sense of accomplishment that he wanted his family, friends and business colleagues to experience 'the high' as well. Joe's Team was created that fall, and in the inaugural year, Joe crossed the finish line of the Gravenhurst Triathlon along with a team of 230!

Joe's Team has become the most successful donor-initiated event in support of The Princess Margaret, raising over \$3.2 million to-date for research into head and neck cancers.

We are grateful that Joe's wife, Cara, his children, Mike and Megan, and his good friends have committed not only to continue Joe's Team but to expand it. In 2011, there will



be a Joe's Team competing and fundraising in Calgary as well as Muskoka. On May 7, the CN Tower was brightly lit in orange—the team colour of Joe's Team—to honour a great man and to celebrate what one individual can accomplish.

## Rebuilding a face... restoring a life

Treatment for cancers of the head and neck region sometimes requires the expertise of surgeons who are also highly skilled in facial reconstruction. Aggressive tumours can invade skeletal and facial tissue, so removing all of a tumour can sometimes result in disfigurement and impairment. Physicians at The Princess Margaret understand how important it is to patients to maintain their physical appearance.

Dr. Ralph Gilbert is a gifted surgeon and a world leader in the treatment of head and neck cancers. He works with patients to help them maintain the facial characteristics and the functionality that they have lived with and grown accustomed to. The work he does gives a very special meaning to the phrase 'personalized cancer medicine'.

Joel Binder was initially told he may not be able to use his mouth and jaw following his cancer surgery. As a father of four children and a corporate lawyer, he needed to find a way to maintain his ability to communicate effectively. Dr. Gilbert and his team were able to rebuild his upper jaw by transplanting a portion of his shoulder blade.



This technique was conceived and developed at The Princess Margaret and is now used around the world for reconstruction of the facial bones.

Dr. Gilbert and his team evaluate the recovery of their patients for many years to make refinements in their reconstructive techniques that continue to improve the lives of patients afflicted with head and neck cancer. He is a highly sought after international speaker in head and neck reconstruction, publishes extensively and trains surgeons from around the world to do this kind of life-restoring work.



# Fidani family fosters technology innovation

In some ways, the recipe for 'innovation' is simple—put the right people together to solve a problem and provide them with the needed tools and resources. It sounds simple, but in healthcare and technology, as in fine food, it isn't simple. There needs to be great care taken in selecting just the right ingredients, then combining and carefully preparing them in a way that brings out the very best.



Back in 2002, the hospital needed to build additional strength in precision radiotherapy, and had an opportunity to recruit a leader for this area. Thanks to the support of the Fidani family, The Orey and Mary Fidani Family Chair in Radiation Physics was created, and Dr. David Jaffray was appointed to that position.

Since that appointment, the Radiation Medicine Program at The Princess Margaret has been a powerhouse of innovation. Physicists work closely with clinicians and with industry partners to make radiation therapy more precise, effective, and efficient. Image-guided radiation therapy (IGRT) was pioneered here starting in 2003, and it has been integrated into all 17 of our radiation treatment machines. Today, we are preparing to directly integrate magnetic resonance imaging into cancer treatment to allow radiation and surgical oncologists to offer an even better standard of patient care.

The Fidani family is very proud of what their support has enabled, and they want to continue the momentum of technology innovation taking place under Dr. Jaffray's leadership. The Carlo Fidani Foundation has pledged \$5 million to allow Dr. Jaffray and his team to continue to innovate and also to commercialize the most promising cancer-related medical devices developed at The Princess Margaret through a new institute for healthcare technology that will be launched in Fall 2011.

## Building a Cyclotron machine to support new diagnostic testing

Molecular imaging is a very valuable tool for researchers at The Princess Margaret who are evaluating the efficacy of new cancer therapies. The current method of molecular imaging combines a radioactive beacon with a disease-indicating molecule. Once these tracers are injected into the body, physicians can use a CT/PET scanner to reveal the location of any abnormalities. They can also see if tumours have shrunk in response to treatment.

The most widely-used imaging molecule today is called FDG (fluorodeoxyglucose), a radioactive glucose which can disclose areas in the body that are using more glucose than normal—often a sign of cancer.

The effectiveness of molecular imaging in detecting and staging tumours is moving it into mainstream use. Ontario health policy is expected to approve the use of molecular imaging as a diagnostic tool, following the lead of British Columbia and Quebec. However, FDG and other radio-pharmaceuticals have short 'half lives' and must be used almost immediately in order for them to have any effect.

Dr. David Jaffray, The Orey and Mary Fidani Family Chair in Radiation Physics, has secured \$6 million of the \$10 million in funding required to build a Cyclotron facility that will allow The Princess Margaret to provide a sufficient and stable pipeline of the radioisotopes required to perform this new type of imaging. \$2.5 million raised by *The Enbridge Ride to Conquer Cancer* has also been directed to this project.

Once the facility is built, contracts to supply other Toronto-area hospitals and research centres will fund the operation of the facility.

# Maintaining a long and strong connection

Back in 2004, the Guglietti family made a generous gift of \$1 million to The Princess Margaret in honour of the matriarch of their family, Concetta Guglietti, who they lost to cancer. Since then, Concetta's four sons, Marco, Johnny, Silvio, and Riccardo (pictured right) have continued their dedication to the hospital and their financial support of gynecological cancer research by entering large teams in *The Enbridge Ride to Conquer Cancer* and the *5K Your Way* walk. Each year, along with members of their extended family, they also organize their own fundraiser—the Most Wanted Fashion Show. Most Wanted has been a sell-out event since it began in 2007, with the organizers delivering big on glitz and glamour on the runway and savory and sumptuous at the dinner table.

The funds donated and raised by the Guglietti family have allowed Drs. Michael Milosevic and Joan Murphy to complete important clinical studies that:

- » Measure the efficacy of brachytherapy (a specialized type of radiation treatment) in women with cervix cancer,
- » Test a new screening protocol for cervix cancer that combines Pap smears with HPV testing



## Molecular imaging can give physicians a reading on the oxygen levels in tumours

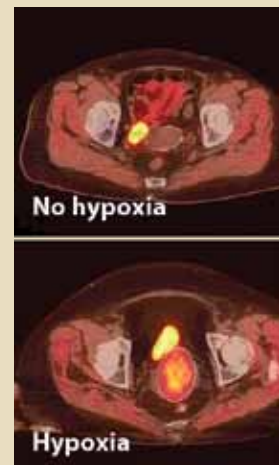
Dr. Michael Milosevic is Director of Research for the Radiation Medicine Program at The Princess Margaret, and he is leading a clinical trial with a group of cervix cancer patients to study the relationship between tumour hypoxia and patient prognosis. The environment surrounding a tumour is often hypoxic (low in oxygen) because the tumour outgrows its blood supply and/or because blood flow to a tumour is generally of poor quality due to leaky vessels.

Radiation therapy may be as much as 2 to 3 times less effective when it is delivered to a hypoxic tumour environment.

Dr. Milosevic is relying on molecular imaging in this study to inform him of how patients are responding to their treatment protocol. FAZA is a molecule that can highlight areas of low oxygen in the body, and this is the molecule that is

injected into the patients to produce the CT/PET images that he is using to make his evaluations.

Dr. Milosevic explains, "The imaging we are doing with the FAZA molecule and the CT/PET scanner may allow us to distinguish patients with well-oxygenated tumours from those with poorly-oxygenated tumours and then use this information to personalize radiation treatment in ways that will improve survival".



# Recreational glider pilot and his family support a new 'navigation' system for patients



While Charles Petersen was receiving treatment at The Princess Margaret for head and neck cancer, he and his wife, Riki Turofsky, quickly came to realize the anxiety that came along with it. Charles is an avid glider pilot in his free time, so he is used to being in control of a voyage. This one was different. Riki decided from

the beginning that she would take on the role of the navigator. She recorded their cancer journey and wrote everything down in a little red notebook—appointments, names of drugs, conversations with doctors, a diary of how Charles felt

each day and the side effects he experienced. It helped them maintain a sense of control.

The potential for serious side effects from the treatment of head and neck cancers is high, including effects on taste and swallowing, oral health and saliva production.

Charles and Riki wanted to show their appreciation for the outstanding care he received, and to make things better for the head and neck cancer patients who might follow him. In July 2010, they donated \$150,000 to support a trial of a new patient navigator system that moves patients more smoothly through their myriad tests and treatment plans while carefully tracking their side effects both during and post treatment. His sister, Jane Burfield, generously matched his donation.

## *Al Hertz Centre for Supportive and Palliative Care Opens*

*A place of compassion and humanity supporting patients and families facing advanced disease and the end of life*



In June 2010, the *Al Hertz Centre for Supportive and Palliative Care* officially opened with a sunny celebration on the hospital's rooftop patio. This Centre has already allowed the Department of Psychosocial Oncology and Palliative Care at The Princess Margaret to take on a new energy and recruit needed staff to the team, including three new palliative care physicians.

A cohesive and compassionate team of social workers, psychiatrists, psychologists, nurses and physicians provide outpatient care to approximately 2500 patients and their families each year—relieving suffering for patients through pain management techniques; educating and preparing patients for treatment; and counselling patients in dealing with disturbances to body image, sexual health and cognitive functioning.

The Centre has supported the partnership of The Princess Margaret with the Kensington Health Centre in the establishment of the Kensington Hospice which opened in August 2011. Palliative care physicians from The Princess Margaret will provide medical care, and research and education will take place at the hospice.



### Partnership with Kuwait Cancer Control Centre

In September 2010, University Health Network (UHN) signed a five-year agreement with the Ministry of Health of the State of Kuwait to provide management and clinical expertise to the Kuwait Cancer Control Centre (KCCC), Kuwait's foremost cancer institution

serving the nation's population of 3.5 million people.

UHN—which includes Princess Margaret Hospital (PMH)—is well-equipped to provide this cancer consulting expertise which is initially focused on radiation medicine, medical oncology, surgical oncology and laboratory medicine—areas where PMH is world-leading. While strengthening cancer service delivery at the KCCC, the partnership provides UHN/PMH staff with international experience and the opportunity to share their knowledge with others. KCCC is looking to UHN/PMH for expertise in nursing and physician education, administration and information technology. The partners also expect to develop systems that will benefit both UHN/PMH and Kuwait.

The financial benefits gained through this partnership will allow UHN to invest in new and innovative approaches to care that will benefit our patients and allow us to continue to be on the cutting edge as a treatment centre for complex cases.



### Dr. Mary Gospodarowicz appointed President-Elect of UICC

Dr. Mary Gospodarowicz, the Medical Director of the Cancer Program for Princess Margaret Hospital, is the first Canadian to be appointed President-Elect of the Union for International Cancer Control (UICC). The mission of the UICC is to connect, mobilize and support organizations, cancer experts, key stakeholders and volunteers in a global

community—working together to eliminate cancer for future generations. "I am pleased to have been involved with the UICC as a member of the Board of Directors, and I look forward to providing continuing leadership. The organization now has over 460 member organizations in 125 countries, and serves a crucial role in facilitating the exchange of information on cancer research and implementation of the most effective cancer control systems."

Dr. Gospodarowicz is also Regional Vice President of Cancer Care Ontario, the Professor and Chair of the Department of Radiation Oncology at the University of Toronto, and Chief of the Radiation Medicine Program at PMH.

The UICC raises awareness of the burden of cancer by coordinating the World Cancer Day annually (February 4) and the World Cancer Campaign. Every second year, they organize a World Cancer Congress.

## Honour Roll

### Strachan Bongard

Human Touch Award  
Cancer Care Ontario

### Dr. Bernard Cummings

Gold Medal  
American Society for Radiation Oncology

### Dr. Mary Jane Esplen

Life Time Achievement Award  
Canadian Association of Psychosocial Oncology

### Audrey Friedman, Jennifer Jones, Janet Papadakos, Irene Wright

CPEN Excellence in Patient Education Award  
Cancer Patient Education Network

### Dr. Richard Hill

Henry S. Kaplan Distinguished Scientist Award  
International Association for Radiation Research

### Dr. Mitsu Ikura

Robert L. Noble Prize  
Canadian Cancer Society

### Dr. Michael Jewett

Distinguished Contribution Award,  
American Urological Association  
SUO Medal, Society of Urologic Oncology

### Dr. Christopher Paige

Bernhard Cinader Award  
Canadian Society for Immunology

### Dr. Lillian Siu

Michaele C. Christian Award in Oncology Drug Development  
U.S. National Cancer Institute

### Dr. Ian Tannock

Honorary Doctorate  
University of London

### Dr. Bradly Wouters

Breur Gold Medal  
European Society for Therapeutic Radiology and Oncology

### Dr. Camilla Zimmerman

William E. Rawls Prize  
Canadian Cancer Society

To help bring the growing cancer crisis to the attention of government leaders, please consider signing the World Cancer Declaration at [www.uicc.org/declaration/sign-world-cancer-declaration](http://www.uicc.org/declaration/sign-world-cancer-declaration)



# Road Hockey to Conquer Cancer teams up!

*Engaging an enthusiastic community of participants—players, doctors, hockey celebrities, volunteers, corporations and a major national partner*



“As the saying goes, there is just no substitute for experience,” explains Paul Alofs, President and CEO of The Princess Margaret Hospital Foundation. “Our Foundation has gained invaluable experience from running successful mega events like the *Shoppers Drug Mart Weekend to End Women’s Cancers* and *The Enbridge Ride to Conquer Cancer*, and that enables us to get up to speed quickly on new events we are planning.”

Because there are few things that Canadians are more passionate about than hockey, the Foundation is excited about launching a fundraiser that connects that passion with cancer research. Our previous experience with large events has helped us engage an enthusiastic community of supporters including corporate sponsors (led by Boston Pizza), hockey celebrities, and media sponsors.

In June 2011, we announced a landmark partnership with the Canadian Cancer Society where the two largest cancer charities in the country will combine forces to run *Road Hockey to Conquer Cancer* in hockey communities across Canada. At the news conference, Peter Goodhand, President and CEO of the Canadian Cancer Society, said, “We are confident that this dawn-to-dusk road hockey marathon will not only be fun, but will also unite everyone involved in the fight against cancer.”

The inaugural event takes place October 1, 2011 at Toronto’s Ontario Place. Game ON!



## Fighting prostate cancer with lasers

Under the leadership of Dr. John Trachtenberg who holds The Fleck/Tanenbaum Chair in Prostatic Diseases, a new type of surgical treatment called targeted focal therapy has been developed and is being tested at The Princess Margaret.

Prostate cancer now affects 1 in 7 men in Canada, and there has been much discussion about the various treatment options, which range from active surveillance through to radical prostatectomy. Focal laser therapy offers a middle ground, being tested with men who would normally be candidates for surveillance, but who prefer to have their tumour eradicated without the side effects associated with conventional therapy.

The treatment involves taking a series of specialized images produced through magnetic resonance equipment (MRI) in order to get the precise location of the tumour. Then, using a unique MRI-compatible robot built at University Health Network (which includes The Princess Margaret), a laser fibre is inserted into the tumour. The fibre delivers heat to eradicate only the tumour. The MRI device simultaneously and continuously measures the temperature in the tumour as well as the surrounding tissue. This real-time imaging ensures complete destruction of the tumour and the safety of the adjacent normal prostate and surrounding tissue.

The procedure is performed under anaesthesia with patients usually being discharged the same day without a catheter. The effects on urinary and sexual function are being closely tracked, and so far neither have been detrimentally affected. Early results of cancer control are encouraging.

# Strategic Initiatives



## Enbridge Ride to Conquer Cancer® builds major momentum!

The Foundation is very proud of the innovation that our clinicians and scientists demonstrate in the challenge to conquer cancer, and we try to be equally innovative in raising funds for cancer research. *The Enbridge Ride to Conquer Cancer* is a great example of how we innovate, and it starts with listening carefully to our supporters. The Ride was the largest cycling fundraiser in the country in its very first year, and it has grown substantially with each subsequent year in the number of participants, the funds raised, and, most significantly, the number of cancer survivors riding.

Steve Merker, Vice President of Business Development and Chief Cycling Officer for the Foundation, says “We are so grateful to the cancer survivors who make the effort to participate in the Ride. They inspire all the other riders and all of us at the Foundation. Because of them, we can all believe that we will CONQUER CANCER IN OUR LIFETIME.”

In 2012, the Ride will offer several route options, allowing more riders to participate and offering new options to previous riders. Also new in 2012 is the introduction of the Gold Helmet—which will be presented to each rider who has participated in five *Ride to Conquer Cancer* events.



## Shoppers Drug Mart® Weekend to End Women's Cancers™ gets major boost from the corporate community

There are few families today that are not affected by cancer. And there are even fewer companies and workplaces. So it isn't a surprise that in 2010 there were 66 corporate teams participating The Weekend helping to raise \$11.1 million. Shoppers Drug Mart, as the title sponsor, invited many of

their suppliers to join in, and teams from Johnson & Johnson, Royale and Carlton Cards enthusiastically stepped up. Laura Dottori-Attanasio, Managing Director and Global Head of Corporate Credit Products with CIBC, one of the largest teams in The Weekend, told us, “Seventy percent of our staff are women, and we know that a lot of our families' lives are touched by women's cancers. So The Weekend is really important to our employees and they love to get involved.”

In 2012, The Weekend will celebrate 10 years strong, and the Foundation is planning many new and exciting elements including a Diamond Club that will recognize those individuals who have made extraordinary contributions to this event.



# Community Giving

## A community leader who is made to measure!



Running a successful business and giving back to the community are very symbiotic activities, and Larry Rosen gained a great appreciation of that as he grew up. His father started a men's apparel business back in 1954, and created the Harry Rosen brand that is now synonymous across the country with 'the well dressed man'. After practicing corporate law in Toronto, Larry joined his father's business, and today he is Chairman and CEO.

Harry Rosen sponsors a number of important activities in the communities in which it operates. Larry also gives generously of his personal time. He is a member of the Ivey Entrepreneurship Advisory Council at the University of Western Ontario and a member of the Ivey Advisory Board. He

leads the United Way campaign for Harry Rosen, and a number of major initiatives to raise money for prostate cancer research, including Harry's Spring Run-Off. We are fortunate to have Larry on the Board of Directors for The Princess Margaret Hospital Foundation, and as a supporter in the upcoming *Road Hockey to Conquer Cancer* event.



## Doves of Hope

Many of those who financially support The Princess Margaret do so in honour of someone special, and a wonderful opportunity to do this is the annual *Doves of Hope* campaign. In 2010, over 10,000 personalized paper Doves adorned the hospital atrium in celebration of loved ones and dedicated hospital staff. Along with their Doves, donors sent generous gifts, making it the most successful Dove campaign ever—exceeding \$1 million in donations.

This was the Foundation's 10th annual Dove campaign, and it honoured the beautiful spirit and legacy of young Lindsay Bolger, a 26-year-old daughter, sister, student and swim instructor who bravely battled a brain malignancy for four years until she passed away on November 26, 2009. Despite doctors' recommendations to take a year off her studies at St. Francis Xavier, she showed her tremendous determination by graduating with honours and delivering the valedictorian address. Self-pity was not in Lindsay's vocabulary, and she found the energy (even while receiving cancer treatment) to run her B-Strong campaign and raise funds for brain tumour research.

Lindsay is an inspiration, but her story reminds us that we still have far to go. Thank you to everyone who supported the 2010 Dove campaign.

# Special Events

## Festa das Amigas

...or Circle of Friends is an event that has now been running for 10 years, and you're very lucky if you can manage to get a ticket. For the women of the Toronto Portuguese community, this event is synonymous with fun, food and, of course, friends...all in generous quantities. Musicians performing live, dancers, a fashion show, jewelry tables, and prizes all provide a wonderful backdrop for having good times with a special community of friends.

Angela Machado started the event and she works hard all year to make the next Festa even more fun and more successful in raising funds for breast cancer research. Dr. Kala Sridhar, a clinician scientist with The Campbell Family Breast Cancer Research Institute, attends each event and speaks to the women about how breast cancer research is allowing more and more women to continue leading healthy, quality lives following a breast cancer diagnosis. To date, Festa das Amigas has raised \$275,000.



## From fun to fundraiser

Many people looking for a way to support The Princess Margaret start with something they love to do with friends and family, and then figure out how to turn it into a fundraiser.

That's what Leo Stakos and Ron James, the celebrity hosts of the national television series, *Fish TV*, decided to do. They turned their passion for fishing into an event that raises awareness and needed funds for prostate cancer treatment.

Picnic-perfect Palmer Park in Port Perry now hosts the annual *Fish TV Celebrity Showdown* every July 1st Canada Day. *Fish TV* pairs up pro anglers with sports celebrities in a tournament style format, and the whole event is filmed and televised nationally by *Fish TV*.

The boats blast off in the morning and return mid-afternoon to a huge crowd of people awaiting the weigh-in ceremonies that determine which team has brought in the most weight in fish. Families can participate in a live auction for



autographed memorabilia, a raffle draw and a silent auction. In five years, this event has raised \$40,000 for Princess Margaret Hospital.

For more information on the event, visit [www.fishtv.tv](http://www.fishtv.tv)



# Special Events

Thank you to the many volunteers and donors who organized Special Events held from April 1, 2010 to March 31, 2011. We acknowledge and appreciate your outstanding efforts!



## Pioneer \$1,000,000+

5K Your Way Walk/Run to Conquer Cancer  
Joe's Team Triathlon

## Innovator \$250,000 - \$999,999

Harry's Spring Run-Off  
The Gerry and Nancer Pencer Brain Trust (Ten Gala + Best of)

## Leader \$100,000 - 249,999

Dick Aldridge Charity Golf Classic  
Grimm's Agnico-Eagle Mines Invitational  
Kelly Silverstein Memorial Golf Tournament  
Oakdale's Golfing For The Cure  
Taylor Cup Pond Hockey Championship  
Toronto Fire Fighter Calendar



## Partner \$50,000 - \$99,999

A Night In the Past for a Cure in the Future  
Mindy Kirsh Memorial Bridge to the Cure Tournament  
Charles Krowitz Woodchuck Golf Classic  
Conquering Kili to Conquer Cancer  
Friends For Life  
HeArt of Yorkville Soiree  
Issie's Quest - Yes We Can FUNraising Dinner  
Festa das Amigas - Circle of Friends  
MIA Golf Tournament  
Most Wanted Fashion Show  
Motorcycle Ride for DAD  
Rally Against Cancer Hardcore (RACH) 3-Pitch Tournament  
Spin 180 Spinning for a Cure!  
The Joe Di Palma Foundation Gala

## Builder \$25,000 - 49,999

Annual Kathy Morrison Memorial Golf Tournament  
BLJC Charity Golf Tournament  
A Night Out With "The Girls" - Breast Restoration Awareness Event (BRA)  
Brave Heart Life Party  
B-Strong Bash  
Evening of Wishes  
Freed Charity Golf Classic  
Hunt for the Cure  
Lifford Boys' Night Out  
Panda Bear's Walk  
Rob's Badwater Run  
Stayin' Alive Disco Party  
Wings of Life



## Friends up to \$24,999

3rd Annual Golf Fore A Cure  
A Diva Night  
A Journey to Heal  
Al Humphrey Memorial Ride  
Annual Mike Dickinson Grey Cup Event  
Annual Scorpion Affair  
Ardyss Canada - Pretty In Pink  
Bavadharani Memorial Fund  
CMRRA Golf Tournament  
Brian Poser's Scotiabank Half Marathon  
Canadian Computer Charity Golf Classic  
Cardano's 10th Anniversary Celebration  
Centennial College Fundraising  
CESC Christmas Party  
Cheryl's Hope Golf Tournament  
Chiros Care -Malignant Melanoma Fund Raiser  
Chubb Insurance Company of Canada



Crop For The Cure  
 Daniela Del Rosso Events  
 Dave Wilson Memorial Golf  
 Tournament  
 Delta Pi Sorority Ribbon & Roses  
 Auction  
 DeMedeiros Family BBQ  
 Dennis Cruz Golf Tournament  
 Don's Walk for Leukemia  
 Dorchester Walk of Champions  
 Ernie Tourney  
 Firefighters Against Cancer's  
 Existence  
 Fish On TV - Celebrity Fish  
 Tournament  
 Friends Forever  
 Friends of the PMH Fundraising Gala  
 Gail Phillips Memorial Golf  
 Tournament  
 George Brown College Events

Judy Langstaff Golf Tournament  
 Judy Taylor Golf Tournament  
 Kelley Wickes Head Shaving  
 Kevin Brillinger Memorial Golf  
 Tournament  
 Kevin Larose Gala  
 Linn Falk's 5th Annual Bike-a-thon  
 Looped for Life Golf Tournament  
 Maple Downs Ladies Annual Pro-AM  
 Tournament



St. Patrick's Day Fundraiser  
 Sunset Pavillion Charity Ball  
 The Conker Ride  
 The Gary Warner Memorial Golf  
 Tournament  
 The Jack B Elie Memorial Golf  
 Tournament  
 The Wedding Co.  
 Todd Wonacott Memorial Curling  
 Tournament  
 Trevor Born's Events  
 Turkey Busting Workouts - Evolution  
 Fitness



Mike Wade Events  
 MPD Support Group Events  
 My Sky Boutique  
 Oakdale Golf & Country Club  
 Opening Lunch  
 Ola Finesse Spring Jewelry Fashion  
 Show  
 Pickle Barrel Golf Tournament  
 PMHF Fundraising Soccer Tour  
 Power 2 Cure  
 Project Cure Paola's Fund Golf  
 Tournament  
 Project Give Back  
 Rapini's Ristorante Fashion Show  
 Ratech Golf Tournament  
 Rebecca's Hope  
 Rebecca's Hope Parrish &  
 Heimbecker Golf  
 Ride for Heart -Team Ed  
 Rina's Boutique Holiday Sale  
 Ross Forfar Memorial Golf  
 Tournament  
 Roy Head Golf in Memory of Jack  
 Cadenhead  
 Select Wine Necktag  
 Shoppers Drug Mart Tree of Life  
 Campaign  
 Skate 4 Cancer



U of T Campus Police Golf  
 Tournament  
 Vanstone Holiday Party  
 Wyatt Pellew Tennis Tournament  
 York Memorial Walk  
 Youth In Time

Girls Night In For Cancer  
 Heidi's Golf Classic  
 Help Be The Change Presents a  
 Bowl-A-Thon  
 Hibiscus Fund Party  
 High Park Firemen's Fire & Ice  
 Bonspiel  
 Hopes and Dreams Gala  
 James Craig Sporting Event  
 Jane Lanthier Fundraising Concert  
 Jeanne Lottie Merchandise  
 JEMM Walk/Run  
 Jo-Ann Cooke Family Foundation  
 Gala  
 John Fortney - Cocktails for Care



# Donor list

The following donor list shows actual gifts received and pledge payments made during the fiscal year April 1, 2010 to March 31, 2011. **Donations made in support of the Shoppers Drug Mart Weekend to End Women's Cancers and The Enbridge Ride to Conquer Cancer are listed in our online Donor List which you can find at [www.pmhf.ca/donorlist2011](http://www.pmhf.ca/donorlist2011).**

♦ denotes donors whose giving includes an estate gift

## \$5,000,000+

The Campbell Family

## \$1,000,000 - \$4,999,999

Boehringer-Ingelheim (Canada) Ltd.

Carlo Fidani Foundation

Dr. Geoffrey R. Conway Memorial Foundation

Susan E. Grange

In Honour of Al Hertz

George E. Mara♦

Allan Slight and Emmanuelle Gattuso

## \$500,000 - \$999,999

Radiation Oncologists - PMH

The Muzzo Family

## \$250,000 - \$499,999

Jamie and Leah Bras & Family

John and Myrna Daniels

Ian and Anne Devine♦

Graham Farquharson

Jennie Huie♦

International Union of Operating Engineers Local 793

In Honour of Melissa Ann Katzman

TELUS

The Gerry and Nancy Pencer Brain Trust

Edward G. Thompson

Gordon Tozer

Varian Medical Systems

## \$100,000 - \$249,999

AstraZeneca Canada Inc.

Marvin and Linda Barnett

Nicolette Bledin

Molly and David Bloom

Jane Burfield

Byron Critchell Reburn Beal Campbell♦

Cancer Care Ontario

Conam Charitable Foundation

David and Lynn Coriat

Bruce Galloway

Susan Gordon

Greenpark Homes

Gucciardi Family

Harry Rosen Inc.

Imperial Oil Foundation

James S. Kinnear and Bridgette Eansor

Sandy and Bart MacDougall

Elizabeth Margaret McLean♦

Ken A. McLean♦

Mechanical Industry Advisory Committee (MIAC)

Michael Albert Garron Foundation

National Pancreatic Cancer

Canada Foundation

Jon Nix

Ontario Financial Services

Ortho Biotech

Charles Petersen and Riki

Turofsky

Play in Support of Cancer

Research Hold'em For Life Charity

Prostate Cancer Canada

Michael A. Psaki♦

Roche Canada

Anna Rolling♦

Scotiabank

SGNC Charitable Trust

Shoppers Drug Mart

Gary and Donna Slight

Greg and Diane Slight

Nikola Stanacev♦

The Allan Kerbel Family

The Buchan Family Foundation

The Sheldon Inwentash and

Lynn Factor Charitable Foundation

Nevil and Susanne Thomas

George and Mary Turnbull and Family

University of Toronto Alumni

Association

Jack and Anne Weinbaum and

Family

Family and Friends of Lusi Wong

## \$50,000 - \$99,999

Amgen Canada Inc.

Aubrey and Marsha Baillie

Jack and Patricia Barclay

Birchall Family Foundation at

the Toronto Community Foundation

Robin and Bill Downe

Fondazione CRUP - Cassa

Di Risparmio Udine - Pordenone

Gertrude Gotlib♦

James Greenan♦

Koji and Mizue Handa

Patrick Hodgson Family

Foundation

Glenn Hunnings

Lamarche Family Foundation

Jocelyne "Jo" Laniel♦

C. Donald Logan

Loretta's Legacy Foundation

Margaret and Wallace McCain

David Moore♦

Novartis Oncology

Reta May Pette♦

Sarah Ratney♦

sanofi-aventis

Allan and Shirley Taylor

Ian Telfer

The Joe Di Palma Brain Tumor

Pediatrics Foundation

The Norman and Marian

Robertson Charitable Foundation

The Posluns Family

The Prostate Cancer Fight

Foundation

The Royal College of Physicians

and Surgeons of Canada

Marilyn L. Yunis

## \$25,000 - \$49,999

Afexa Life Sciences Inc

Keith Ambachtsheer and Virginia

Atkin

Asbestos Workers Local 95

BBS Securities Inc.

Ben and Hilda Katz Charitable

Foundation

BLJC

BMO Financial Group

Stephen and Linda Boutilier

Bristol-Myers Squibb Canada

David and Paula Butterfield

Canso Investment Counsel Ltd.

John and Nina Cassils

Gail and Irving Cooper

L.E. Cotterchio

Ernst & Young

Enrique and Lilly Fenig

Michael Flemming♦

Friends For Life

Nancy Lockhart and Murray

Frum

GMP Securities LP

Veneta Margrit Goebel♦

Cathy Hale

Charles Hantho Family

John D. Heraud♦

Home Insulation Corporation

Marcia and Rob Jajarmi

Jose and Alexandra Jardino

Jilla and Robert Williams

Foundation

Kalmar Family Foundation

Gerald and Paula Kirsh and

Family

Local 67 - United Association of

Journeymen & Apprentices

Esther and John Loewen Family

Kenneth and Sheila McArthur

Jim Meekison and Carolyn

Keystone

Merck Frosst Canada Ltd.

Lazo Mikijelj

Nesbitt Family

Chris S. Purkis

Jessie and Julie Rasch Foundation

Rosa Roessle♦

Angelo and Yvette Santorelli and Family

Sam Sniderman and Janet Mays

Kevin M. Sullivan and Family

Joey and Toby Tanenbaum

The Asaro Family

The Asco Foundation

The Laurier Group

The Mariano Elia Foundation

The Schneider Family Foundation

The W.G. Lewitt Family

Betsy Wright

## \$10,000 - \$24,999

1277015 Ontario Ltd.

1364671 Ontario Inc.

1634834 Ontario Inc.

534717 Ontario Limited

Abbott Laboratories Ltd.

Leonard and Marcy Abramsky

Ronald J. Adams

Allstream Inc

Brian Aune In Honour of Brian Steck

A. C. Baillie

Family of Matthew W. Barrett

Stephen Belgue and Michelle Di Carlo

Michael Benjamin and Family

BFI Canada Inc

BloombergSen Investment Partners

Jane Botsford

Sherry Bourne

John H. Bowey

Tanya and Paul Braun

Brettler Mintz Foundation

Bridle Bash Foundation

Brother Canada

John Brough

John and Mary Cassaday

Celgene Corporation

Charities Aid Foundation

America

Pat and Constantine Chaukos

Keith Chen

Chiros Care  
 CIBC  
 Community Foundation of Mississauga  
 William G. Crerar In Honour of Susan E. Crerar  
 Dancap Productions Inc  
 Elvio Del Sorbo  
 Eric and Heather Donnelly♦  
 Dr. Jay Charitable Foundation  
 David Dulberg  
 Paul and Teresa Dykeman  
 Dynamic Fund Foundation  
 Tom and Karen Ehrlich and Family  
 Gail and Robert Farquharson  
 Firefighters Against Cancer's Existence Foundation  
 Four Star Distribution  
 Front Street Capital  
 G & N Coco Construction Ltd.  
 G.A. Paper International Inc.  
 Gerry and Caren Ruby Family Foundation  
 Get Tickets E-Solutions Inc.  
 Giovanni and Concetta Guglietti Family Foundation  
 David and Bonnie Goldstein  
 Al and Malka Green  
 David and Melanie Harris  
 George and Linda Heller  
 Janet and Peter Herman  
 Marilyn Hosang  
 House of Praise The Redeemed Christian Church of God  
 Margaret Joan Howlett♦  
 Arnold and Lynn Irwin  
 Bonnie and Terry Jackson  
 JBS Foundation Inc.  
 Stephen Johnson  
 Phyllis and Samuel Kauffman  
 Jack and Pat Kay  
 Martin Kelman  
 Shawn Kimel  
 John and Margaret Krall  
 Jason Kroft  
 Gordon and Joyce Lackenbauer  
 Kyong Jin Lee  
 John Levy  
 Local 128-International Brotherhood of Boilermakers  
 Sheila Loftus and Family  
 Longos Family Charitable Foundation  
 M&M Meat Shops Ltd.  
 Kenneth MacDonald  
 June Mansfield♦  
 Emile Marino  
 Tom and Lynn McCulloch  
 McTrac Enterprises Inc.  
 Mechanical Contractors Association of Toronto  
 Frank Mersch  
 Bruce H. Mitchell  
 Stephen Morson  
 James Mulvenna♦  
 Susan Newman  
 Philip and Joan Norris  
 Ontario Power Generation Employees' & Pensioners' Charity



## Thank you Chad Cieslik

Since losing his mother-in-law to breast cancer a decade ago, Chad has participated in every event that the Foundation's Strategic Initiatives group has organized. He walked in the very first *Weekend to End Breast Cancer* and has crossed the country several times meeting walkers in all the other Weekend walks across the country. He has participated in the *Ride to Conquer Cancer* and looks forward to *Road Hockey to Conquer Cancer*. 41 events completed and a personal fundraising total over \$230,000!

View [www.pmf.ca/onlinereport2011](http://www.pmf.ca/onlinereport2011) for video

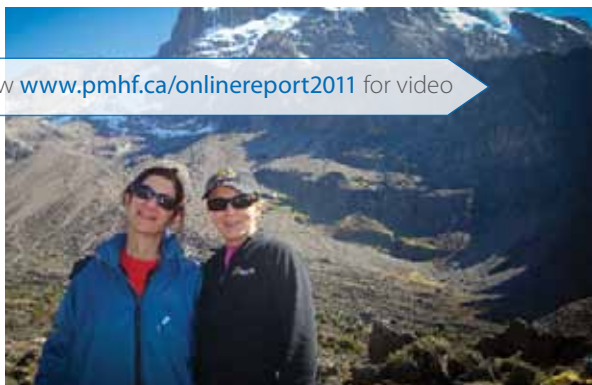
Desmond and Pamela O'Rorke  
 Lou Pagnutti  
 Vincent Pang  
 Gloria Veronica Maria Pasquale Cann♦  
 Peninsula Merchant Syndications Corp.  
 Performance Group of Funds  
 Pharmx Rexall Drug Stores Ltd.  
 Plan Masters, INC.  
 PricewaterhouseCoopers LLP  
 RA Coco Investments Inc.  
 Brian Ramsay  
 RBC  
 Reaction Distributing Inc  
 Marilyn Reiseneker  
 Roman Metal Fabricating Ltd.  
 Barrie Rose and Family  
 S.O. Asher Consultants Ltd.  
 Cookie and Stephen Sandler  
 Family and Friends of Tito Sansalone  
 Scotia McLeod  
 Donna Steck and Family In Honour of Our Beloved Husband and Father Brian Steck  
 Lily Steele♦  
 Straumann Canada Limited  
 Barbara Stymiest  
 Kenneth and Joan Taylor  
 Sherry Taylor Drew  
 The Bitove Foundation  
 The Master Insulators Association of Ontario Inc.  
 The Toronto Crown & Bridge Study Club  
 Trinity Development Foundation  
 Universitaetsklinikum Carl Gustav Carus Dresden  
 John and Tess Van Netten  
 Walmart Canada Corp.  
 James Waters  
 In Honour of the Wonderful Life of Percy Weinstein - Myrna, Karen and Deedee Weinstein  
 Larry Weir  
 Wellington West Capital Markets Inc.  
 Neville Wesson♦  
 Lynn Wilson  
 Michael and Shari Wilson  
 Shelagh E. Wilson

Florence and Mickey Winberg  
 Women's College Hospital  
 Richard Wookey  
 Shirley Young♦  
**\$1,000 - \$9,999**  
 150 Toro Inc. Himel Group  
 1540735 Ontario Ltd. Ghandour Painting  
 1682331 Ontario Inc  
 2028866 Ontario Inc.  
 24 Hour Reefer Service Ltd  
 4 Star Drywall (99) Ltd.  
 5 Corners Productions Inc.  
 996660 Ontario Ltd  
 A Farber & Partners Inc.  
 A-1 Credit Recovery & Collection Services Inc.  
 AA Pharma Inc  
 Aarmat Construction Corp.  
 Allen Abbott  
 Roger Abbott  
 Tanya Abrams  
 Academic Clinicians' Management Services  
 Acier Wirth Steel  
 Hyman and Phyllis Ackerman  
 Acker Finley Inc.  
 Active Gear Co of Canada Limited  
 Renee Addison  
 Admar Promotions Group  
 Advantage Crombie Kennedy Inc.  
 Aero Plastics Ltd.  
 Affleck Greene McMurtry LLP  
 Patricia Agius  
 Agora Communication  
 Airboss of America Corp.  
 Aird & Berlis LLP  
 David Aitken  
 AJMS Financial Group Inc  
 Gino Alberelli  
 Luigi Alberga  
 Albert and Temmy Latner Family Foundation  
 Srdjan Aleksic  
 J. A. Alexander  
 Hassan Alkari  
 All Star Carpentry  
 Dustin Allan  
 Allan and Susan Fenwick Charitable Foundation  
 All-Connect Logistical Services Inc.

Clive & Barbara Allen  
 Allergan Inc.  
 Taiwo Alli-Balogun  
 Allied Nevada  
 Alpa Lumber Inc  
 Harvey Alstodt  
 Amca Sales Ltd.  
 Anax Inc  
 Elizabeth Anderson  
 James M. Anderson  
 Coralie L. Andrew  
 Andrew's  
 Stephanie Anevech  
 Winston Ang  
 Carmen Irene Anglin  
 Ronald Anson-Cartwright  
 Trevor and Lynda Appleby  
 Aquicon Construction Company Limited  
 Ardis Archer  
 ARGO Lumber Inc  
 Hazel May Arnold♦  
 Arrow Hedge Partners Inc  
 Asbestos Workers Local 58  
 Ashantee Investments Inc  
 Shawn Aspden  
 Aspen Ridge Holdings Inc.  
 Alistair Assheton  
 Astral Broadcasting Grout Inc.  
 Lisa Atkinson  
 Atlantic Packaging Products Ltd.  
 Eleanor Augustejn  
 Maria Aversa  
 Nancy Avison  
 Wilfred Avison  
 Aviva Canada Inc.  
 E. Ayranto  
 B & D Insulation Inc.  
 B.A. Himel Family Foundation  
 Luc Bachand  
 Chris Bacon  
 William F. Badke  
 Abby Badwi  
 Andrea Bagaybagayan  
 Jehan Bagli  
 Ilya Bahar  
 Wilbur N. Bailly  
 Ronald Baines  
 Musarat Bajwa  
 Clifford E. Baker  
 Baker Real Estate Corp.  
 Raff and Frank Baldesarra



View [www.pmhf.ca/onlinereport2011](http://www.pmhf.ca/onlinereport2011) for video



## Thank you Karyn Drewnowsky and Pat Kay

Karyn Drewnowsky took up hiking as a form of therapy after she lost her husband Marshall to a brain tumour in 2005. He was only 51, and he wouldn't give in to his cancer until he attended his youngest son's bar mitzvah. Then in early 2011 Karyn decided to take on a 'serious' hike and summited Mount Kilimanjaro with her friend Pat Kay. Together they raised over \$87,000 for the Pencer Brain Tumor Centre through the great support of family and friends.

Helen G. Balfour  
Gwen Ballentine  
Ernest L. Balmer  
Auby Banack  
Faith and Jordan Banks  
Lawrence Barakett  
Barbara and Harvey Wolfe Family Charitable Fdn.  
Barclays Capital Canada Inc  
Bari Hochman Cloth  
Clifford Barker  
Reg Barnard  
Peter Barnes  
Douglas and Kathryn Barrington  
John and Betty Barrons  
Zoltan Barzso  
Marina Bass  
Robert Bastianon  
Nancy Batchelor  
Bathe & McLellan Building Materials  
Pat Bauer  
Craig Baxter  
BDO Dunwoody LLP  
Edwin L. and Elaine Beallor  
Bob and Marilyn Beamish  
Woodbridge Foam Corporation  
Sally K. Beattie  
W. Geoffrey Beattie  
Beauty Systems Group Can Inc.  
Beaverhall Homes  
Beck Taxi Limited  
Robert and Sharron Beder  
Rod and Susan Behan  
Mervyn C. Bell  
Bell Canada Employee Giving Program  
Michael Bellman  
Diana Belmonte  
Belrock Construction Ltd.  
Bence Motor Sales Ltd.  
Paul Bennett  
Maria F. Bento  
Gay Berger  
M. Barbara Berner  
Joanne Bernier  
Raffaella Betto  
Bharradhi Arts Inc  
Norman Biback, Q.C.  
Anna Bicci  
William Biggar  
Martha Billes

Herb and Fran Binder and Family  
Billi Marcus Foundation Inc  
Lenny and Evie Binder  
Jennifer Bionda  
Randi Bitove  
Dave Black  
Heather E. Black  
Kathleen Black  
Black & McDonald Ltd.  
Pavel Blaha  
Murray E. Blankstein  
John and Anne Blasman  
Frances Blau  
Kimberley Blease  
Kathy Bloom  
Michael Bloom  
Claude Blouin  
Lorna Blumen  
Oliver Bock  
Bodies by Design Fitness Studios  
Boiler Inspection & Insurance Co.  
John Bolger  
Janet L. Bomza  
Mike Bondy  
Larry and Kathleen Bookman  
Paul and Theo Marie Borg  
Trevor M. Born  
Eric Bornstein  
Beryl Borsook\*  
Mary Boscarino  
Robindra N. Bose  
Ann Boston-Reamey  
Joan Boswell  
Jim and Deborah Bouchard  
Joseph Henri Boucher  
Matthew Bowen  
Peter Bowie  
Richard Boxer  
Maggie Bras  
Bratty and Partners, LLP  
Wendy Brear  
Roman Brenner  
T. David Briant  
Bridgewater Associates LP  
Chantal Brien  
British Columbia Insulation Contractors Association  
John Brittain  
George C. Britton  
David Broadhurst  
Cindy Brooks  
Philip Browman and Family

Barry Brown  
Cynthia C. Brown  
Douglas Brown  
Elizabeth Jean Brown  
Kevin Brown  
Browns Shoes Inc.  
Jim and Anna May Bruce  
Ely Buckland  
Bodil Bunting  
Kenneth Burditt  
Michael Bugar  
Robert Burgess  
Burgundy Asset Management Ltd.  
Scott and Dianne Burk  
Bill Burke  
Michael F. Burke  
Burlacoff Financial Inc  
Alexander and Gladys Burns  
Latham and Paddy Ann Burns  
Business Solutions Alliance Inc.  
Ronald Peter Butler  
Valerie L. Butler  
Butterfield Family Foundation  
Jonathan Butterfield  
William C. Buttimer  
C.W. Shasky & Associates Ltd.  
Cabral Catering  
Calloway Real Estate Investment Trust  
Norma J. Callum  
Calsper Developments Inc.  
Cambridge Group of Clubs  
Jane Campbell  
Canada Life Assurance Company  
CanadaHelps.org  
Canadian Urology Research Consortium  
Canadian Alliance Terminals Inc.  
Canadian Association of Psychosocial Oncology  
Canadian Blood and Marrow Transplant Group (CBMTG)  
Canadian Conference of Asbestos Workers  
Canadian Partnership Against Cancer Corp.  
Canadian Pacific Railway  
Canadian Prostate Cancer Network  
Cannon Hygiene  
Can-Rad Beauty Limited  
Martin Caplan

John Capozzolo  
Chris Carbone  
John Carbray  
Robert Carew  
Caridian CBT (Canada) Inc.  
Brian Carr  
Neil Carragher  
Douglas Carscadden  
Mary Carson  
Brian and Charolte Carter  
Tom Carter  
Barbara L. Cartwright  
Rihard Cartwright  
Casco Inc.  
Susan Caskey  
Cassels Brock & Blackwell  
Josie Castelli  
Castello Properties Inc.  
John Cathers  
Cattolica Eraclea Social Club  
Stephen G. Caudwell  
Siobhan Cavanaugh  
CDI Computer Dealers Inc.  
Celgene (Canada)  
Central Ontario Healthcare Procurement Alliance  
Antonio Cerminara  
CG Maintenance Services  
Chad Management Group  
Margaret Chambers  
Anna Chan  
Christopher Chan  
Peter Chan  
Philip Chan  
The Chandaria Family and Conros Corporation  
Elizabeth Chang  
Murray J. Chant  
Larry Chapman  
Kevin Charles  
Tim Charlton  
Allan C. Chartrand  
Chaucor Inc  
Lynn Chauvin  
Gordon and Julie Cheesborough  
Gord and Margaret Chellew  
Hsian Hsiang Chen  
Jenny Chen  
Kim Chetwynd  
Peter Chiu  
Chok-Chun Lau Family Charity Foundation  
Lai Kum Chow

Alexander and Saralee Christ  
Mark Christensen  
David and Valerie Christie  
Jim Christodoulis  
Anthony Chronopoulos  
Chubb Insurance Company of  
Canada  
Frank Ciccolini  
Peter Cifuentes  
Cisco Systems  
Citrolad Canada (Juices) Inc.  
Ronald and Lynnette Clegg  
Bruce Cleland  
Manuel Clementino  
Clive Shragge Inc. Pearson  
Enterprises  
CMS Building Consultants Inc.  
CN Employees' and Pensioners'  
Community Fund  
James Coatsworth  
Cobmex (Canada) Inc.  
Jean and Glenn Cochrane  
Arthur and Harriett Cohen  
Sharon Cohen  
Stephen and Roslyn Cohen  
Clifford Cole  
Theresa Coleman  
Colley Borland & Vale Insurance  
Brokers Ltd.  
David Collier  
Colossus Minerals Inc.  
Combined Insurance Company of  
America  
Con-Drain Company (1983) Ltd.  
Conelco/Feumore  
Con-Elco Ltd.  
Mike Connell  
Consumer Contact  
Brian Cooper  
May and Ken Copland  
Cesidio Coppola  
Corby Distilleries Limited  
Vincenzo Corvinelli  
Cosimo Commisso  
Mary Cary and Gary Coughlan  
Lauren Coules  
Charles Coupal  
Olga and Warner Cowan  
John Craig  
Paul and Elvi Craig  
Edward H. Crawford  
Eddie Creed  
Terry and Bruce Creighton  
Scott Crichton  
Norman and Grace Cross  
Crossby Dewar  
Rebecca Csuzdi  
Elaine and Jack Culiner  
Marty Cutler  
David and Stacey Cynamon  
D.F. Haslam Management Ltd.  
Isilda Graca Da Silva  
Mark Daitchman  
Fern Daiter  
Jim Dale  
Daniel and Elizabeth Damov  
Kevin Dancey  
Danier Leather Inc  
Data Integrity Inc  
Theresa Daub  
James Davidson

Nancy Davidson  
John Davies  
Karen Davids  
Alexander Davis♦  
Charles Davis  
Bill Dawson  
DC Foods (2001) Inc.  
Andy Defrancesco  
Carla Degasperis  
Sandra E. Deike  
Daniela Del Rosso  
Delgant (Civil) Ltd  
Della Shore Investments Ltd.  
Delmar Cargo  
Deloitte & Touche  
Delta Pi Sorority  
Delta Urban Inc.  
Nicola Dembroski  
George and Katherine  
Dembroski  
Nicole Demerse  
Jeremy Desai  
Designer Fabric Outlet Ltd.  
Devencore Realities Corporation  
Canada Ltd  
Jean C. Deverill  
Phillip and Peggy DeZwirek  
Peter Di Bartolomeo  
Tony Dibernardo  
R. Dickson  
Emanuel DiFalco  
Peter and Anna Di Giuseppe  
Mary Dinsdale  
Direct Flight Theatre  
Richard Diver  
Lien Do  
Therese Dohring  
Dole Foods of Canada Ltd.  
Dolente Concrete & Drain Co  
Dominion Caulking Ltd.  
Don & Son Building Supplies Ltd  
Donlee Precision Employee Trust  
Arthur Donovan  
Cameron and Lynn Douglas  
Downsview Chrysler Plymouth  
(1964) Ltd.  
Downtown Animal Hospital/  
Willowdale Animal Hospital  
Dr. Vikas Gupta Medicine  
Professional Corporation  
Druxy's Inc.  
Sandra E. Dudley  
Dufferin Peel Educational  
Resource Workers'  
Karen Duggan  
Steve R. Dunk  
Donald James Dunlop  
Peter Dunlop  
Laura Dunne  
Hung Duong  
DuRock Alfacing International Ltd.  
Annette Duvdevani and Eli  
Fleishmann  
Joe Dwek  
Mark Eagles  
Mary Eagleson  
Easter Seal Society  
E-axis Inc  
Norman and Ellen Eckler  
Egon Zehnder International  
Irma Eibich

Wendy Eisen  
Elirpa Construction & Materials  
Limited  
Nicole Ellies  
Jordan Elliott  
Martin Elliott  
Emil Van Essen LLC  
Empire Communities  
Enbridge Gas Distribution  
Luise Enderle  
Loreen Ens  
Ensil Canada Ltd  
Enterprise Holding Foundation  
Loran Epp  
Epstein Cole LLP Barristers  
Peter Erlendson  
Harry Erlich  
Philip Ernst  
Wilfred M. Estey  
Kirsteen Etherington  
European Bagels Inc.  
Gay Evans  
Robert Evans  
Everest Supply Inc.  
F Garcia Meat Product Ltd  
F.E.D. Construction Management  
Ltd.  
F.G. Lister & Co. Ltd.  
Brian Facey  
Agnes Faraci  
FedEx Canada Ltd.  
Joseph Fehrenbach  
Bernard Feinstein  
Goldie Feldman  
Mark Feldman and Alexandra Hoy  
Jo-anne Ferguson  
Francisco Fernandes  
Fernview Construction Ltd.  
John Ferreira  
Ross Ferrier  
Ferring Inc.  
Irene Helen Feuer♦  
Barry Fielding  
Fiesta Farms Inc  
Isobel M. Findley  
Brian Finer  
Susan Finkbeiner  
David N. Finkelstein  
John Finkle  
John Finlay  
Joe and Cara Finley  
Wallace Finley  
Jack Fireman  
Barbara Firman  
First Capital Realty Inc.  
First Republic Capital  
Bernard Fishbein  
Joan Fisher  
Doug Flegg  
Jack Fleischmann  
Cassandra Flipowski  
FM Global Foundation Charitable  
Contributions  
Fogler, Rubinoff LLP  
Kevin Fong  
Luis Fonseca  
J.E. Fordyce  
Nancy Forfar  
Archie Forsyth  
Roy Foss  
Dwight Fowler

Catherine E. Frame  
Lynn Francis  
Melvin Frank  
Franklin Templeton Investments  
Frank Frantisak  
Peter L. Fraser  
Fraser Milner Casgrain  
Jane Freed  
Freed Corp.  
Harvey and Miriam Freedman  
Jeremy Freedman  
Fregata Restaurant & Night Club  
Herbert Frieberg  
Harvey and Annice Frisch  
Ruth Frisch  
Edith Friskney  
Friuli Property Management  
Limited  
Naomi Fromstein  
Fruitman Kates LLP  
Harvey and Helen Fruitman  
Murray Frum  
Colin Fruman  
Larry and Eileen Fryer  
Chris Fuhrmann  
Helen Fujiki  
Sarah Fullerton  
John Furber  
Furlani's Food Corp.  
Richard and Veronika Furst  
G. Solway & Sons  
James A. Gaiger  
Mike and Rocchina Gambardella  
Arthur Gans  
Garfinkle, Biderman LLP  
Brian Garside  
Gary Bluestein Charitable  
Foundation  
Bruno and Renate Gass  
Christena Gay  
Gazzola Paving Ltd.  
General Gear Employee Trust  
GE Canada  
John George  
GEP Productions Inc  
Andrea Gerard  
A Gerrard  
Paolo Giacco  
Joyce and Harry Gibbard  
J. Patrick Gibson  
Cory Giesselman  
Giftcraft Ltd.  
Jack A. Gilbert  
Gurjeet S. Gill  
Gillespie Family Foundation  
Phil Gillin and Ava Sands  
Jack Glasier  
Richard Glatt  
Ann Glazier Rothwell  
Global Management Networks Inc  
(Adeste)  
Lillian and Norman Glowinsky  
Gluskin Sheff + Associates Inc.  
J. Lawrence Goad  
Louise Godfrey  
Myer Godfrey  
Norman S. Godfrey  
Peter Godsoe  
Lionel and Mary Goffart  
Janice Goldberg  
Michael Goldberg



Golden Thai Restaurant  
Gerald Goldenberg  
Sheila C. Goldenberg  
Goldman, Sachs & Co.  
Goldman, Spring, Kichlard, &  
Sanders LLP  
Goldstein Financial Consultants  
Steven Golub  
Grace and Gilbert Goodman  
Jonathan Goodman  
Morris Goodman  
Goodmans LLP  
Kenneth Goodwin  
John M. Gordon  
Merritt E. Gordon  
Howard Gorman and Rachel  
Rafelman  
Gopinath Govindraj  
Senator Jerry and Carole Grafstein  
Grace Graham  
Karen Graham  
Robert Graham  
William and Gwendolyne  
Graham  
Granny's Poultry Cooperative  
(Manitorba) Ltd.  
Rosemary Grant  
Graphic Groove Inc.  
Great Gulf Homes Charitable  
Foundation  
Greater Houston Community  
Foundation  
Great-West Life  
Robert Green and Jill Kantelberg  
Stewart Green  
Green and Spiegel  
Green Living Enterprises  
Nadine Greenberg  
Greenberg Traurig  
Susan Greenbloom  
Brian Greenspan  
Edward Greenspan  
Avi and Irina Greenspoon  
Michele Greer  
John Gregory  
Gresta Ltd.  
Nick Grieco  
Bruce and Penelope Grierson  
Griggs Family Foundation-Toronto  
Community Foundation  
Steve Groeneveld  
Jeanette and Harvey Grosman  
Eric Grundy  
John Gryfe  
Brian Guenther  
Patricia and Frank Guenther  
Marco Guglietti  
Silvio Guglietti  
Gerry Guilfoyle  
Sheryl Gutzin  
Beverly Guy  
Danny Guy  
H.W. & Associates Janitorial  
Services  
Tracy A. Hackett  
Tootsie and Gerry Halbert  
Haliburton Broadcasting Group  
Ellen Hall  
Isobel Hall  
Elizabeth D. Hamilton  
Blake Hampton-Davies

Hancor of Canada Inc  
Doris Hansen  
Hugh Hanson  
Peter Hanson  
Robert Harlang  
Harrington and Associates Ltd  
Susan and Edward Harsant  
Murray Hart and Jill Kamin  
Harvest Marketing  
Harvey Kalles Real Estate Ltd.  
Naneve M. Hawke  
David and Lenore Hawkey  
Laura Hawthorn  
Joyce M. Hay  
A. Ruby Hayashi  
Grace L. Hayball  
Arden R. Haynes  
Heat & Frost Insulators & Asbestos  
Workers Local 119  
David Heaton  
Helen and Philip Delman  
Foundation Inc.  
Helix Biopharma Corp  
Brian Hellyer  
M.E. Hellyer  
Help Be The Change  
Hengab Investments Ltd.  
Grahame Henry  
W. Bernard Herman  
Donald Herne  
Jeffrey and Elizabeth Herold  
Ernie Herzig  
Marion Hewlett  
Joan R. Hickey  
Joanne Higgins  
High Park Club Ltd.  
Lawrence and Elyse Hildebrand  
Hillen Nursery Inc.  
Susan E. Hillery  
Roy and Joan Hints  
Lawrence Ho  
Timen P. Ho and Ling H. Ho-Lai  
Shinny Hockey  
Raphael Hofstein  
Marion V. Holmes  
R. Brian Holmes  
Edward Holowchuk  
Joe Hong  
Hood Packaging Corporation  
Iain and Mary Ann Hood  
Joan Hood  
Hopkins Family Foundation  
Horizon Sheet Metal Ltd.  
John H. Hough  
Howell Data Systems Inc.  
Linda Hryma  
Juliana Hsu  
Renata and William Humphries  
W.B.G. Humphries  
William Humphries  
R. Neil and Ann Hunking  
John and Julie Hunt  
Nancy Hutchinson  
Benjamin J. and May Hutzel  
Nicole Hutzel  
I. Domingues & Sons Ltd.  
Mary Iantorno  
IBM Canada Employees and  
Retirees  
Imperial Smelting & Refining Co.  
of Canada

IMRIS Inc.  
Industrial Alliance Insurance and  
Financial Services Inc.  
Glenna Ingold  
Innomar Strategies  
International Association of  
Heat and Frost Insulators and  
Asbestos Workers  
Susan Ippolito  
Irbeus Holdings Inc  
Manuela Ireland  
Irene's Flowers  
Martine Irman  
Joanne Irvine  
Mark Itwaru  
J.G. Jackson & Associates  
J.O.D.O Holdings Inc  
J.S. Cheng & Partners Inc.  
Jackman Foundation  
David Jackson  
Lenore Jackson  
Jam Industries  
James Gutmann Limited  
Mario Javier  
Javlee Construction Limited  
JD Factors Corporation  
David Jenkins  
Jermark Plumbing and  
Mechanical Services Ltd.  
Edith Jewett  
Peter Jewett  
John and Deborah Harris Family  
Foundation  
John W.S. Preston Charitable  
Foundation  
Donald and Anna Johnson  
Elspeth A. Johnson  
S. Ross Johnson  
W. John R. Johnson  
Colleen Johnston  
Bob Johnstone  
Patrick Jordan  
Joriki Inc.  
Urban Joseph  
JR Garber Psychology Professional  
Corp  
K. S. Hobbs Services Ltd.  
Elise and Harvey Kalles  
Gerry and Sandra Kaminsky  
Harry Kaner  
Jugrav Kang  
Susan Harris and David Kassie  
Rasha Katabi  
Marvin and Estelle Kates  
Katherine Newmann Design  
Louise S. Kawasaki  
Katherine Kay  
Eva Kayfetz♦  
Barry Kearns  
Denise Keats  
David Keeley  
Patrick B. Keeley  
Michael Kehoe  
Tom Kehoe  
Ryan Keller  
Kenair Apartments Ltd.  
Joan Kennedy  
Marion P. Kenney  
Peter Kenny  
Andrew T. Kerr  
Norman Kerr

Roey Kert  
Jack Keslassy  
Sadiqa Khan  
Glenna Khanna  
Mary Kilworth  
Susan and James King  
Kingsgate Plumbing & Drain Inc.  
Knight's Bridge Capital Partners  
Joel Kirsh  
Brian Kivland  
Martin Klaponski  
Frank Klemenchuk  
Klenzoid Company Limited  
Amnon Klinghoffer  
Holger Kluge  
Elliott Kohn  
Alkis Kontos  
Adam Kosoy  
Brian D. Kosoy  
Paul Koster  
Kraft Foods DongSuh Foods  
Corporation  
Norman Kraftchuk  
Lila Kramer♦  
Raj Krishan  
Jerry Krolikowski  
Kumari's Ltd.  
Kal Kuronen and Lois Topham  
Bonny Kurt  
Douglas Kurtin  
Edward S. Kurtz  
Bob Kutner  
Kai Kwok  
L&M Truck Parts  
La Senza Corporation  
Michael Laine  
Rebecca Laing  
John Lambert  
Tammy Landau  
Judith and Bruce Langstaff  
Lanxess Inc.  
Steve Larke  
Kevin Larose  
Brian Larter  
Molly Lau  
Mary Laurence  
Lucy Lavrineknko  
LawPro  
Maira Lawrence  
Scott Lawrence  
Mary Ann Lawrie  
Allan Lax  
Theo Lax  
Lazar Famous Deli and Bakery  
Andrew and Elaine LeFeuvre  
Eleonora Leddy  
Esther Lee  
Min Lee  
Vanera Lee  
Wing Yan Lee  
Yue Lee  
Lee-Mar Developments  
Andrew Lefevre  
Michael Lehman  
Ann L. Leibel  
Anitra Leksers  
Alan Lenczner  
Kevin Leon  
Lilli Leong  
Leon's Furniture Limited  
David Leslie

Bonny Leszcz  
Fook Yee Leung  
Weldon & Joan Levine  
Ellen Lewchuk♦  
Jules Lewy and Joanna Slone  
Liberty Development Corp.  
Marilyn Libin  
Sally Libman  
Ricky Lie Ken Jie  
Annette Liehr  
LifeCell Corporation  
Alex Lifeson  
Lifford Wine Agency  
Light and Life Ministries  
Jane L. Lind  
Link Charity Canada Inc.  
Marcia Lipson  
Lipton Wiseman Altbaum &  
Partners LLP  
Anthony J. Lisanti  
Fred Litwin  
LIUNA OPDC  
Carpenters Union  
Andrea Lockhart  
David Lofranco  
Anna Loh  
Lena Lombardi  
Marija Loncar  
Gus Longo  
A. B. Lorriman  
Onofrio Lorusso  
Isabel Losch  
Karen Louie  
Barbara Lounsbury  
Thornton Lounsbury  
Nancy Love  
Otto and Ida Lowas  
Steven and Linda Lowden  
Alec Lui  
Henry Lui  
Vassie Lumley  
Don Lunau's Family  
L'Unita Restaurant  
David Lurie  
Lydia Lee in Trust  
John Lynch  
Lynxcor  
Mach II Press  
Susan Maass-Robinson  
Tony Maccarato  
Danielle and James MacDonald  
Eve and H. Macdougall  
Bruce and Barbara MacGowan  
Jaime Machado  
Jimmy and Melissa Machado  
Jonathan Machado  
Douglas MacKay  
Peter Mackendrick  
Mackenzie Financial Corporation  
Ross MacKinnon  
Ted Macklin  
Enid Rae MacLachlan  
William MacLaren  
Rob Maclellan  
John Macmillan  
Michael MacMillan and Cathy  
Spoel  
Thomas MacMillan  
Eric MacNeil  
Barbara MacNeill  
Iain Macphail

Macquarie Capital Markets  
Canada Ltd.  
Macquarie Group Foundation Ltd.  
Joann MacRae-Newman  
Magna Powertrain Inc.  
Geraldine Mahoney  
Karen Maidment  
Kam-Kong Mak  
J. Paul and Phyllis Malette  
Malfar Mechanical Inc.  
Monica J. Malkus  
Angelo Malone  
Ida Mamnone  
Manulife Financial  
Stuart Mapp  
Maranello BMW  
Billi Marcus Foundation Inc  
John Margie  
Luciano Marino  
Marjorie Allan Foundation  
Markelytics Solutions India Pvt.  
Ltd  
Helen and Gerald Marr  
Natasha Marra  
Jill Denham and Stephen Marshall  
Lawrence H. Marsland  
Martin Daniel Interiors  
Scott J. Martyn  
Emerson Mascoll  
Andry Mason  
Martin A. Mason  
Robert Mason  
Masters Insurance Ltd.  
Phyllis M. Matheson  
Gloria Matias  
Irving and Esther Matlow  
John and Jo Matovich  
Geoffrey Matus  
Maurice Joseph Weisfeld & Louis  
Weisfeld Charitable Fdn.  
Maxum Drywall Inc.  
Maxxmar Window Fashions  
Uri Mayer  
Mark Mayerson  
Nina Mazziotta  
Andrew and Louise McAskie  
Robert and Rosalie McAuley  
Dave McCready  
Debbie McCue  
Elizabeth M. McDermid  
Lynn McDonald  
John McDougall  
John Lorn McDougall  
Robert McFarland  
Lori MCGoran  
Michael Mcgrath  
Colin McIver  
Doris McKague  
McKeller Structured Settlements  
James McKenzie  
Alasdair McKichan  
Daryl McLean  
Lucille McLean  
McRae Engineering Equipment  
Ltd.  
Miles S. Nadal/MDC Corporation  
Medtronic of Canada Ltd.  
Roy Megarry  
Kevin Meikle  
Sandra Meinig  
Attilio Melatti

Theresa Mellis  
Tony Melman  
Maisie Melo  
Melrose Paving Co. Ltd.  
Peter Mendell  
Barbara Mendelsohn  
Joanne Mercer  
Margaret and Bruce Mercer  
William H. Mercer Limited  
Alan Meriam  
Merrill Lynch Canada Inc.  
Metric Contracting Services  
Corp.  
Sharon Mey  
Michael Bros Excavating  
Lea Michaels  
Michener Institute  
Rob Micieli  
Micro Consulting Inc.  
Middleton Group Inc  
Marlene Miller  
Milli Ltd.  
Jeff Mills  
Elizabeth A. Milne  
Tom Milroy  
Myles Mindham and Stephen  
Gilles  
Kenneth Miner  
Cameron Mingay  
Ministry of Children & Youth  
Services  
Frances and Clive Minto  
Florence Minz  
Elena Maria Miraglia  
Mister John Auto Collision Ltd.  
George Mitchell  
Neda and Ata Moeini  
Dilshad Mohamed  
Molinaros Fine Italian Foods Ltd  
Montcorr Packaging Ltd  
Lawrence Montgomery  
Delia M. Moog  
Brian Moran  
Linda Moran  
Sandra Moretti  
Lesley Morison  
Robert Morris  
Pierre Morrissette  
Glen and Joan Morton  
Moses and Temara Tobe  
Foundation  
The Moshoian family  
Gale and Jerold Winter  
Virginie Mount  
Mountainview Homes  
Gregory Paul Mountjoy  
Orest Moyses  
Mti Ltd  
Michael Mucci  
Robert Mucci  
Mult-Area Developments  
Kathleen and Stanton Mulvihill  
David Munro  
Katherine Munro  
Carla Murphy  
Sandra Muzzi  
Steven Muzzo  
Leslie Myers  
James Mylrea  
Arnold and Libby Naiman  
Nashville Developments

National Bank Financial  
National Bank of Canada  
National Importers Canada Ltd  
Mohammed A. Nawaz  
Neamsby  
Neelands Refrigeration Limited  
Stephen Neil  
Joan Neilson  
Anne Nelson  
Emily Nelson  
Jill and Reed Nelson  
Warner Neumann  
Robert Newby  
Philip Ng  
Hanh Nguyen  
NHL Foundation  
Joyce Nichols  
Marie Nichols  
Joan Nicholson  
Nick and Lynn Ross Charitable  
Foundation  
Judith M. Nicoll  
Nine West/The Jones Group  
Mike Nininger  
Karl Nodel  
Ian V.B. Nordheimer  
Michael Norgrove  
Normerica Inc.  
Lesley E. North  
North American Produce  
North City General Insurance  
Brokers Ltd.  
North York Tile Contr.  
Northam Realty Advisors Ltd.  
Northern Digital Inc  
Nursing Agency  
Nuvis  
Stella P. Oates  
David Odell  
Susan J. O'Donahue  
Randall Oliphant  
David and Gwen Oliver  
Murray Oliver  
Paul Olsen  
Garry and Catherine Oman  
OMERS Private Equity  
Debie O'Neill  
John O'Neill  
Kathleen M. O'Neill  
Yetta Orfus  
Helen A. Orsino  
Ortec Finance BV  
Louis Orzech  
Marie José Overweel  
Joanne Owens  
Geatane-David Ozmond  
P&H Milling Group  
PAA Laboratories Inc  
Pacific World  
Christopher and Colleen Paige  
Pal Benefits Inc.  
Pal Insurance Services Ltd  
Palace Arms  
G. Palazzo  
Paletta International  
William Palmer  
Mike Palmieri  
Nick and Loretta Pantaleo  
Hildegard Pape  
In Honour of Walter B. Pape  
Paradise Homes Corp.



Paragon Security  
James Parks  
Parkside High School  
Par-Pak Ltd.  
Parrish & Heimbecker Ltd.  
David Parry  
Graziella and Beppino Pasquali  
Jodi Pasternak  
Patrick and Barbara Keenan  
Foundation  
Rose Patten DiGiacomo  
Paul Dorian Medicine Professional  
Corporation  
Richard Pay  
Peter Pearce  
Noordeh Family  
Carolyn Peek  
Ann Peel  
Pellikaan Design  
Edward Pennock  
Brian Penny  
Performance Group  
John Peron  
Marc Perreault  
Carl Pescio  
Peter and Paul's Baskets & Gifts  
Peter Paul Charitable Inc.  
Doug Peters  
John Petrosoniak  
Micahel Pharoah  
John Phelan  
Phelps Group Inc.  
Philip J Solondz Family  
Foundation  
Philip Smith Foundation  
Larry Phillips  
Maureen Pho  
Livany Pialis  
Pianos Bros. Construction  
Limited  
Picton Mahoney Asset  
Management  
Ms. Piltzmaker  
Jose Pimentel  
Grenville Pinto  
Ward and Diana Pitfield  
Peter Pitrun  
Jillian Pivnick  
Richard Pivnick  
Planit Measuring Company Inc.  
Donald Plummer  
Mary Poirier  
Roger Poirier  
Adam Polan  
Murray H. Pollitt  
Seymour Pomotov  
Pope & Company Limited  
Michelle Porepa  
Scott and Paula Porritt  
Port Royal Mills Ltd.  
Mia Poscente  
Alan Potts  
Jack Prazeres  
Maurice and Donna Preston  
Preston Human Capital Group Inc  
Price Waterhouse Coopers LLP  
Eleanor Pridham♦  
Profile Drilling Inc.  
Protects Lock & Alarm Inc.  
Portuguese Community of Maple  
Vaughan

Provincial Partitions Ltd  
C. J. Prudham  
Puratos Canada Inc.  
Stephen Pustil  
PowerOne Capital Markets  
Limited  
Qualicom Innovations Inc  
Quality Custom Blending Ltd.  
Quartet Service Inc.  
Queen Post Properties Inc.  
Queen's University  
Yong K. Quek  
William and Cynthia Quinn  
R. Howard Webster Foundation  
David H. Race  
Harry Radomski  
Elaine and Don Rafelman  
Stuart Raftus  
Robert Rainbird  
Rainbow of Hope Inc  
Suman Rakhit  
Frank and Sharon Ramagnano  
Saloumeh Rasouli  
Robert S. Rawlings  
Raylan Electrical Systems Inc.  
Raymond James Ltd  
RCC Group Inc.  
Ready Bake Foods Inc.  
Ruth Redelmeier  
Ralph Reed  
Aaron Regent  
Elaine Reid  
Margaret W. Reid  
William G. Reid  
Reid's Heritage Homes Ltd  
Florence Reilly  
John Reilly  
Fred Reisman  
Reitmans (Canada) Ltd.  
Remax  
Brent Retter  
Reuven International Ltd.  
Rexall Foundation  
Dirk and Anne Reyneveld  
Johnny Rhee  
Richard Wengle Architect Inc  
James Rickard  
Derek Riley  
Rina's Boutique Ltd  
Barb and Ced Ritchie  
Jo-Ann E. Ritchie  
Tracy Ritson  
RJ Gould Insurance Agency  
Helaine and Lionel Robins  
Ken Robins  
Robins Appleby Charitable  
Foundation  
Warren Robinson  
Marilyn G. Robson  
Lou Rocca  
Marisa Rocca  
Rocco and Irene Pantalone  
Foundation  
Barbara Rodd  
Ariella Rohringer  
Adolph Rolin  
Katherine and Frank Rolph  
Brian Roman  
Richard J. Rooney  
Richard Rooney  
Mary Rose

Andrea Rosen  
Family and Friends of Ethel Rosen  
Karen Rosenberg  
John Rosenthal  
Michael and Rosalene Rosicki  
Lynda Ann Rosser  
John Rossetti  
Barry Rotenberg  
Sandra Rotman  
Gladys Cinderella Rowe♦  
Jane Rowe  
Roy Turk Industrial Sales Ltd  
Royal LePage  
Michael J. Rozario  
RSM Richter LLP  
Peter Rubenovitch  
Ronald Rubinoff  
John Ruddy  
Michael Rumball  
Tim Ryder  
S & C Electric Canada Ltd.  
S. Chum Torno Fund  
S.C. Land Management  
Sage Investments Ltd.  
Gary and Joyce Saifer  
St. Dunstan of Canterbury Church  
Salida Capital LP  
Leon Saltsov  
Glen Salzman  
Cynthia Silverman  
Sanctuary Day Spas  
B. Sansn  
Sap Canada  
Saskatchewan Building  
& Construction Trades  
Council  
Andrea Sass-Kortsak  
Graham Saunders  
Glenn Sauntry  
Barry Sawyer  
Angela Scauzillo  
Michael Scauzillo  
Schawk Canada Inc  
Ron and Irene Schelfhaut  
Schering-Plough Canada Inc.  
Vanda Schiavone  
Rolf Schoene  
Robert Schroeder  
Schumacher Family Foundation  
Alan Schwarz  
Charles and Mina Schwarz  
SciCan  
Terence Scully  
David Sculthorpe  
Patricia Sculthorpe  
Adriano Scurci  
Diana and Paul Sealy  
Sears Canada Inc.  
Douglas G. Seaton♦  
Select Wine Merchants Corp.  
Frank and Red Selke  
Senang Investments Ltd.  
Alejandro Serrano  
Peter Seto  
Sofina Foods  
Shade-O-Matic  
Shadowcorp Investments Ltd.  
Shane B. Inc.  
Alka Sharma  
Ashish Sharma  
Satyendra Sharma

Maureen Shaughnessy Kitts  
Wayne Shaw  
Sheila and Robert Sheaffer  
Heather Sheehan  
Stanley and Donna Shenkman  
Anita Shenoy  
Shepell.FGI  
Sheridan Nurseries Ltd.  
Sheridan Cyrus Dentistry  
Professional Corp  
Sherman Foundation  
William Sherman and Lyne  
Savard  
Vikram Shethna  
Henry and Gloria Shewchuk  
Brian Shields  
Allan Shiff  
Owen Shime  
Shimmerman Penn LLP  
Alan Shinton  
Laurence Shiu Yam Eng  
Naju B. Shroff  
N. L. Shuttleworth  
Siemens Canada Ltd.  
Maria Silva  
Florence and Al Silver  
Eric Silverberg  
Sid and Sue Silverberg and  
Family  
Randi Silverstein  
Silvio Construction Co. Ltd.  
Svetlana Smic  
Simmons & Assoc. Ltd.  
Leonard and Micki Simpson  
Bonnie Singer  
Matthew Sinuita  
Ron Sirkis  
Margaret Sisley  
Barry Sklar  
Ruth Sklar  
Linda Sky Grossman  
Sky Homes Corp.  
Paul and Carol Slavens  
Slavens & Associates Real Estate  
Inc  
Slovak Community Circle of  
Oshawa  
Faida Smale  
Smart Centres  
Michael Smedley  
Geoffrey Smith  
Mark Smith  
Nigel Smith  
Scott Smith  
Stephen D. Smylie  
Jennifer Smythson  
Raymond Charles Snell♦  
Ann Snidero  
Frank Soave  
Soberman LLP Chartered  
Accountants  
Sobey's Ontario  
Solar Group Inc.  
Henry Solow  
Marisa and Edward Sorbara  
Joseph Sosnkowski  
K. Barry Sparks  
John Spears  
Spectrum Realty Services Inc.  
Marion and Don Spencer  
Jeff Spinks

# Thank you **Backbacon and Beer Social Club**



In 2009, as club members were planning their Christmas Party, many thought that the \$10 they each spent on 'Secret Santa' gifts could be better used as a group donation to a cause they all felt was important. They agreed that cancer had affected almost everyone's family, and so decided to make The Princess Margaret Hospital Foundation the recipient of the \$500 they collected. In 2010, they continued their support with another generous gift.

Hindupuram Sriharsha  
 Hellen Allen Stacey♦  
 Sheila Stahl  
 Peter Stajan  
 Helen Stark  
 Steeles Memorial Chapel  
 Gaye and Andy Stein  
 Ronald S. Steinberg, Paula  
 Brockman and Susan Caplan  
 Dr. Howard Steiman  
 Joseph and Elaine Steiner  
 Kirk F. Stevens  
 John D. Stevenson  
 Leah-Claire Stevenson  
 Jason Stewart  
 Morag L. Stewart  
 William Stewart  
 Joan Stinton♦  
 Michael Stock  
 Alan and Cheryl Stoddart  
 Mark Storie  
 Strada Aggregates  
 Strada Crush Aggregate  
 Processing  
 Stratford Festival  
 Elsa and Ted Stringer  
 K. Stroble  
 James E. D. Stuart  
 Paul Sudolski  
 The Sun Life Companies  
 SunSmart Melanoma  
 Foundation  
 Kazimiera Supczak  
 David Sutin  
 Jean M. Swanson  
 Malcolm and Marjorie Swartz  
 Symas Holdings Corporation  
 Synovate Ltd.  
 T.G.H. Otolaryngology Research  
 Group Inc.  
 Vaclav Taborsky  
 TACC Construction Ltd.  
 Laurie Taller  
 Bernard Tam  
 Ronald Peter Tam  
 George Tambakis  
 Gwladys Tanner  
 Edward and Janet Taylor  
 Lee Taylor  
 Stan and Gloria Taylor  
 TD Bank Wholesale  
 TD Canada Trust

Teknion Form Inc.  
 Ron Temple  
 Andrea Tersigni  
 David Terveen  
 Jan and Kathy Tesar  
 Tesari Charitable Foundation  
 Therese Thackray  
 The Allstate Foundation of Canada  
 The Alofs Family  
 The Barnes Family Charitable  
 Foundation  
 The Benjamin Group  
 The Bradstreet Family  
 Foundation  
 The Buckingham Charitable  
 Foundation  
 The Car Company of Canada  
 The Carl Orbach Foundation  
 The Central Group  
 The Chastell Foundation  
 The Co-operators General  
 Insurance Co.  
 The Etobicoke Church of God  
 (Seventh Day) Charity  
 The European Monuments Inc  
 The Event Centre  
 The FAAS Foundation  
 The Finkler-Friedland Family  
 Foundation  
 The George & Kay Goldlist Family  
 Foundation  
 The Global Group  
 The Heritage Wealth Strategy  
 Group Inc.  
 The Honey and Leonard Wolfe  
 Family Charitable Foundation  
 The Ice Men  
 The Ira Gluskin And Maxine  
 Granovsky Gluskin Charitable  
 Foundation  
 The Iserve Group Inc  
 The Jo-Ann Cooke Family  
 Foundation  
 The Jodamada Foundation  
 The John & Tuula Ross Charitable  
 Foundation  
 The Koffler Foundation  
 The Lawrence and Judith  
 Tanenbaum Family Foundation  
 The Leonard & Felicie Blatt  
 Foundation

The Les and Minda Feldman  
 Charitable Foundation  
 The Liz and Tony Comper  
 Foundation  
 The Majestic North Group Inc.  
 The Manson Family Foundation  
 The Margaret Ann and Donald S.  
 McGiverin Foundation  
 The Martin Family  
 The Michael Young Family  
 Foundation  
 The Norman and Margaret  
 Jewison Charitable Foundation  
 The Oskar Ascher Schmidt  
 Charitable Foundation  
 The Peter & Shelagh Godsoe  
 Family Foundation  
 The Philip Smith Foundation  
 The Rotman Family Foundation  
 The Sobey Foundation  
 The Torgan Group  
 The Travel Network Corp  
 The United Church Of Canada  
 The Wedding Co.  
 The Whiteside Foundation  
 The Womens Fitness Clubs of  
 Canada Inc.  
 The Woodbridge Corporation  
 The Young Family Foundation  
 Thiru Nagarajah O/A NT Financial  
 Services  
 Douglas Thompson  
 Lewis Thompson  
 Ruth Thompson  
 Terry and Carole Thompson  
 John Thomson  
 Susan Thomson  
 Thelma Thomson  
 Thorncrute Construction Ltd.  
 Richard Thorpe  
 Three Dees Management Limited  
 Vera Thutewohl  
 James Till  
 Patrick Tiller  
 Tippet Richardson Ltd  
 Murray Tipping  
 Sandra Title  
 Tolin Enterprises Ltd.  
 Kerry Tooth  
 Philip Torno♦  
 Robert Torokvei  
 Toronto Firefighters Association

Toronto Hospital Urology  
 Associates  
 Toronto Lofts Realty Corp  
 Toronto Maintenance Company  
 Ltd.  
 Toronto Professional Inc.  
 Toronto Zenith Contracting  
 Limited  
 Maryl Towle  
 Ann Travers  
 Traynors Bakery Wholesale  
 Sandra Trehub  
 Trican Masonry Contractors Inc.  
 Tridel Corporation  
 Greg Trieloff  
 Trimin Enterprises Inc.  
 Truco Holdings Limited  
 James H. Truill  
 Marlene Truscott  
 Truster Zweig LLP Chartered  
 Accountants  
 Alexandros Tsakopoulos  
 Yolande Tsampalieros  
 Betty Tse  
 Dan Tsubouchi  
 Tuchman Family Foundation  
 Gillian Tuffin  
 Sandra Tullip-Pow  
 Alina Turk  
 UBS Securities Canada Inc.  
 UCC Press  
 Linda Uniat  
 Uniboard Canada Inc.  
 Unico Facility Services Canada  
 Company  
 United Association of Plumbing  
 and Pipe Fitting Local 46  
 Universal Construction Inc  
 Universal Workers Union Local 183  
 University of Toronto Press Inc.  
 University Plumbing & Heating  
 Ltd  
 Uni-World Corporation Limited  
 Upper Canada Soap & Candle  
 Makers  
 Uptown Painting Contractors Ltd.  
 Germaine Urquhart  
 V. Hazelton Men  
 Nancy Valenza  
 Valeurs Mobilieres Desjardins Inc  
 Charles Vallance  
 Tiim Van Altyne



David Van Hal Teren  
 Germaine Van Overloop\*  
 William G. Vanderburgh  
 Louie Vassilakos  
 Vaughan Electrical Supply Co. Ltd  
 Herbert Veisman  
 Rishma Velji  
 John E. Verity  
 Almas and Zul Verjee  
 Versent Corporation ULC  
 Viana Roofing & Sheet Metal  
 Limited  
 Anthony Viner  
 Mary Vipond  
 Bruna Vlela  
 Michael Volpatti  
 Volpe Paper Fibres Inc.  
 Mildred Wade  
 Ronald and Faye Wagner  
 Lorie Waisberg  
 Mark and Elana Waldman  
 Brad Walford  
 Walker Family Office  
 Peter and Kimberlee Wallace  
 Craig and Kimberley Walters  
 James Walters  
 Walters Inc.  
 Sinclair Wardrop  
 John Warwick  
 Bill Washington  
 Wasteco  
 Joye Waterhouse  
 Geoff Waterman

Marjorie V. Waters  
 Ron Waters  
 George Watson  
 John Watson  
 Wawanesa  
 John Weatherall  
 Joanne Weaver  
 Shabnam Weber  
 Doug Webster  
 Graham and Judith Weeks  
 Weeks Construction  
 Harvey and Lindsay Weiner  
 Seymour Weinstein  
 Susan Weisbarth  
 Weisz Family Foundation  
 Tony Weldon  
 Marion Jean Wellwood  
 Alfred Wen  
 William W. Westcott  
 Gabriele Westwinkel  
 Ian Wexler  
 Brad White  
 Melanie Whitehead  
 Guy Whitfield  
 Marua Whngu  
 Wietzes Toyota  
 Jennie I. Wildridge  
 D. J. Wiley  
 John B. Wilkes  
 Vera Wilkins  
 Robert Williams  
 Christopher and Georgiann Wills  
 D. Jean Wilson

Edna Wilson  
 Jane Wilson  
 Michael Wilson  
 Richard B. Wilson  
 Scott A. Wilson  
 W. H. Wilson  
 WilsonArt Canada  
 Bert and Marilyn Winberg  
 Window Treatments Inc.  
 Windsor Regional Hospital  
 Winners Merchants  
 International  
 Katherine C. Winstanley  
 Ronald Winter  
 Howard Wise  
 Lynda Wise  
 Fern and Herb Wisebrod  
 Jack and Nan Wiseman  
 Ian Witterick  
 WLU Student's Union  
 David and Mary Wolf  
 Anita Wolfe  
 Isabella Shuk Ling Wong  
 Kan Sum Wong  
 Robert Wood  
 Sharon Wood  
 Darrell Woolnough  
 Kenneth Wormald  
 Douglas Wright  
 Ouida Wright  
 Petra Wu  
 Wyatt Pellew Tennis Tournment  
 Wyeth Consumers Healthcare Inc.

Raymond Wysocki  
 Mitchell Wywiorski  
 X1 TICKETS LLC  
 XE.com Inc.  
 XTR Energy Company Limited  
 Minnie Yack  
 Carry Yap-Aljofree  
 David Yeates  
 Una Yen  
 Yolles Partnership Inc.  
 York Memorial Collegiate  
 Institute  
 York University Foundation  
 Marina Yoshida  
 D. Michael Young  
 Eileen Young  
 Mark Young  
 Robert Young  
 Evelyn Youston  
 Rachel Yu  
 Mona Zabanah  
 Len Zablodny  
 Giovanna Zaccolo  
 Joyce Zemans  
 Zentil Property Management Inc.  
 Dov and Caroline Zevy  
 Ron Zevy  
 Dominic Zita  
 Eric Zobelein  
 Carole H. Zucker  
 Zukerman Family Foundation  
 Kelly and Myles Zyblock

We are very grateful to the following firms who have generously donated their skills, products, and materials, or provided added value in support of The Princess Margaret.

98.1 CHFI  
 102.1 the Edge  
 104.5 CHUM FM  
 680News  
 Air Canada Vacations  
 AM640  
 AM740  
 AMJ Campbell Van Lines  
 Astral Outdoor  
 Barefoot Wine  
 BBQ Gourmet  
 Bicycling Magazine  
 Birks and Mayors  
 BNN (Business News Network)  
 BOOM 97.3  
 Boston Pizza  
 Browns Shoes  
 Calvin Klein  
 Canadian House and Home  
 CBC  
 CFRB Newstalk 1010  
 CIBC  
 Citytv  
 Classical 96.3FM  
 Clean Sheet

Coca-Cola Bottling Company  
 COLD-FX  
 Colio Estate Wines  
 Concord Adex  
 CP24  
 CTV  
 EastDell Estate Winery  
 EDO Sushi Inc.  
 Fisheye Corporation  
 Frito Lay  
 Frozen Pond  
 Gatorade  
 Greenpark Homes  
 Hands On Entertainment  
 Hansen Construction  
 Harry Rosen  
 Heenan Blaikie LLP  
 House & Home Media  
 IMA  
 Irving Consumer Products  
 J3 Canada  
 Johnson & Johnson  
 KPMG  
 Kraft Canada  
 Linwood Homes

Longo's  
 MAC Cosmetics  
 McWhirter and Associates  
 Merit Vacations  
 Muskoka Building Co.  
 Naked Creative  
 New Balance  
 OMNI Television  
 PCM Inc.  
 Pedal Magazine  
 Pepsi / Frito-Lay  
 Pro Hockey Life Sporting Goods  
 Q107  
 RBC Royal Bank  
 Rogers Communications Inc.  
 Sassafras Restaurant  
 Shaw Media  
 Shoppers Drug Mart  
 SNAP Newspaper Group  
 Sobeyes  
 Spirale Banquet & Conference  
 Center  
 Sportsnet Radio FAN 590  
 Steam Whistle Brewery  
 Stewart's Baskets & Balloons

SUGOI Performance Apparel  
 Sun News Network  
 Sunquest Vacations  
 SuperClubs Breezes Resorts  
 Swiss Chalet Rotisserie & Grill (Cara  
 Foods)  
 The Brick  
 The Daniels Corporation  
 The Globe and Mail  
 The Hockey News  
 The National Post  
 The Toronto Star  
 TLN  
 Toronto Sun  
 Town Shoes/The Shoe Company  
 Trade Secrets  
 TSN Radio 1050  
 vitaminwater  
 Volkswagen Canada  
 Winners Merchandise  
 Y&R  
 ZoomerMedia

# Research Chairs

*An endowed Chair is the highest honour in academic life, prestigious for Chairholder and donor alike. Princess Margaret Hospital is committed to fostering academic excellence and each endowed Chair enhances our ability to attract and retain leading researchers, educators and trainees. Our Chairholders are recognized internationally for superior academic achievement, experience and success in teaching and research.*

## Chair

The AMGEN Chair in Cancer Research  
The Bartley-Smith/Wharton Chair in Radiation Oncology  
The Daniel E. Bergsagel Chair in Medical Oncology  
Molly and David Bloom Chair in Multiple Myeloma Research  
Alan B. Brown Chair in Molecular Genomics  
The Ronald N. Buick Chair in Cancer Research  
Butterfield/Drew Chair in Breast Cancer Survivorship  
M. Qasim Choksi Chair in Lung Cancer Translational Research  
J. Douglas Crashley Chair in Gynecologic Cancer Research  
Dr. Mariano A. Elia Chair in Head & Neck Cancer Research  
Anna-Liisa Farquharson Chair in Kidney Cancer Research  
The Orey and Mary Fidani Family Chair in Radiation Physics  
Gattuso Chair in Breast Surgical Oncology  
The JCB Grant Chair in Oncologic Pathology  
The K.Y. Ho Chair in Prostate Cancer Research  
The Alan and Susan Hudson Chair in Neuro-Oncology  
Kirchmann Family Chair in Neuro-Oncology Research  
Lee K. and Margaret Lau Chair in Breast Cancer Research  
The Harold and Shirley Lederman Chair in Palliative Care  
The Love Chair in Prostate Cancer Prevention Research  
The Addie MacNaughton Chair in Thoracic Radiation Oncology  
The Philip S. Orsino Chair in Leukemia Research  
OSI Pharmaceuticals Foundation Chair in Cancer New Drug Development  
RBC Chair in Nursing Oncology, Research and Education  
Kevin and Sandra Sullivan Chair in Surgical Oncology  
Joey and Toby Tanenbaum/Brazilian Ball Chair  
The Scott Taylor Chair in Lung Cancer Research  
Weekend to End Breast Cancer Chair in Breast Cancer Research  
The Robert E. Wharton Chair in Head & Neck Surgery  
The Robert E. Wharton Chair in Reconstructive Plastic Surgery

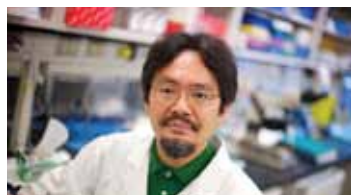
## Chairholder

Dr. Robert Rottapel  
Dr. Brian O'Sullivan  
Dr. Ian Tannock  
Dr. Donna Reece  
Dr. Geoffrey Liu  
Dr. Christopher Paige  
Dr. Pamela Catton  
Dr. Ming Tsao  
Dr. Joan Murphy  
Dr. Fei-Fei Liu  
Dr. Michael Jewett  
Dr. David Jaffray  
Dr. David McCready  
To be appointed  
Dr. Malcolm Moore  
Dr. Abhijit Guha  
Dr. Warren Mason  
Dr. Senthil Muthuswamy  
Dr. Gary Rodin  
Dr. Neil Fleshner  
Dr. Andrea Bezjak  
Dr. Mark Minden  
To be appointed  
Dr. Doris Howell  
Dr. Jonathan Irish  
Dr. Gang Zheng  
Dr. Frances Shepherd  
Dr. Tak Mak  
Dr. Patrick Gullane  
Dr. Stefan Hofer

## PMH-held Chairs at University Health Network

The Gloria and Seymour Epstein Chair in Cell Therapy and Transplantation  
The Fleck/Tanenbaum Chair in Prostatic Diseases

Dr. Armand Keating  
Dr. John Trachtenberg



Dr. Naoto Hirano has joined The Campbell Family Institute as Scientist and Associate Director of Research for the Immune Therapy Program. His research will focus on human T-cell immunology, with an overarching goal to develop new immunotherapies for cancer patients.

Dr. Hirano was previously Assistant Professor of Medicine at the Dana-Farber Cancer Institute, Harvard Medical School in Boston, MA.



# JCB Grant Society

Membership in the JCB Grant Society is offered to donors who have included The Princess Margaret Hospital Foundation in their will or have made a future or life income gift. These special friends of the Foundation have made the fight to conquer cancer in our lifetime part of their own personal legacy.

The JCB Grant Society is named after the distinguished Toronto professor of anatomy, Dr. J.C. Boileau Grant, the author of Grant's Atlas of Anatomy. The Princess Margaret has a special connection with Dr. Grant. His widow, Anne Catriona Robertson, left us a bequest of the Atlas when she died in 1982. With the annual royalty payments, The Princess Margaret Hospital Foundation has created the JCB Grant Chair in Oncologic Pathology, a \$2.2 million endowed chair, as well as a major named endowment fund.

The Grant family's example is important to us: they have left an important legacy with a creative gift, and they have improved our ability to conduct leading-edge cancer research. Through the JCB Grant Society, we pay tribute both to the Grant family and to each donor who has confirmed a planned gift to The Princess Margaret.

Frances I. Masefield Acheson  
Val and Ernie Adriaanse  
Scarlat Albright  
Bruce Alexandor  
Omar Ali  
Paul and Sheila Alofs  
Keith Ambachtsheer and Virginia  
Atkin  
Loretta and Etienne Amestoy  
Roger Andersen  
Shirley Arnold  
Norman K. Ashurst  
William F. Badke  
Wilbur N. Baily  
Jan H. Balledux  
Jack and Patricia Barclay  
Katharine E. Barilla  
Yee Bell  
Francesco Benichasa  
Roslyn and Bernard Bennett  
Shirley Bennett  
Beulah Besharah  
Rita Bette  
Aruna Bhatnager

Rosa Bianca  
Catherine Blackburn  
Dorothea Ruth and Philip Bloom  
Michel C. Bois  
Frank Bosco  
Robindra N. Bose  
Olive Boudreau  
Geoffrey Boyes  
Mary Brandon  
Harold and Fredelle Brief  
Beverly A. Briggs  
Rob Bristow  
William P., Gail and Billy Brown  
Ruth M. Buchanan  
Joan and Jack Burkholder  
Reta Burrows  
David and Paula Butterfield  
Laura and Sven Byl  
Richard Cadieux  
Fausto Carbone  
Gail Carman and Dave  
Hollingworth  
Dorothy Carr  
Christopher A. Carson

Eleanor G. Chapman  
Margaret E. Chapman  
Paul Chen  
K. Carol Christian  
Joyce K. Chung  
Valerie and James Clark  
Anne Clements  
Arthur and Harriett Cohen  
Julie Colosimo  
Luciano and Paola Colozza  
Olga and Warner Cowan  
Antonio Crescenzi  
Janice S. Crichton  
Barry Crookes  
Irene Crowe  
Beryl Cruse  
Enola Czech  
Fern Daiter  
Julie Davis  
Jean Davison  
Mary Dawkins  
Robin De Mercado  
Joyce H. Denyer  
Tim Devlin

Joseph Di Geso  
Daniela Di Giantomaso  
Wilson G. Dow  
Jessie L. Dowling  
Maurice Drieu  
Diane N. Drotos  
Joao J. Dutra  
Linda Ecclestone  
Naomi Eisenberg  
Leola English  
Audrey Ennis  
Margaret A. Evered  
Patricia Ewart-McLean  
Roy A. and Elizabeth J. Fawcett  
Joseph Fehrenbach  
Lisa and Ron Feyerabend  
Madeline Fielding  
Leland J. Fisher  
Patricia K. Ford  
Josie, Jeanne and Archie Forsyth  
Jake E. Fowell  
Sherri Freedman and Jeff Hoffman  
Sandra J. Frost  
Larry and Eileen Fryer

## Douglas Taylor delights in the tax advantages of donating securities



Douglas Taylor enjoys looking back and researching his rich family history, but he's also excited to look forward and have his 'affairs in order' in a way that both recognizes his family members and maximizes the amount of his estate that is directed to support cancer research.

In planning his estate, Mr. Taylor is pleased to be able to take advantage of federal tax regulation that eliminates capital

gains taxes on securities donated to charities like The Princess Margaret Hospital Foundation.

In 2003, Dr. Neil Fleshner moved to The Princess Margaret to head up the urology department. Because of the good experience he had with Dr. Fleshner, Mr. Taylor decided to also come to The Princess Margaret for his follow-up appointments. He is generous in his praise of the polite staff, the pleasant and comfortable environment, and the efficiency—every appointment was on time. After being so well cared for and seeing first-hand the good progress being made in the treatment of prostate cancer, Mr. Taylor is pleased to have the opportunity to support the cancer research going on at The Princess Margaret.



# Thank you **Nevil** and **Rebecca Thomas**

This father/daughter team raises funds for The Discovery Program which focuses on treatment innovation for head and neck cancer patients. Programs include regenerative medicine, drug development, and survivorship programs. They are inspired in their efforts because Nevil's wife and Rebecca's mother, Su Thomas, has received life-prolonging treatment at The Princess Margaret for a rare tumour in her sinuses. Rebecca participates in the *Ride to Conquer Cancer*, and the entire Thomas family participates in *5K Your Way*.

Michelle Fuss  
 Anthony Fyles  
 Kathy Gallivan  
 Monica L. Gaudry  
 Paul Gauthier  
 Marilyn Gazez  
 Harry and Joyce Gibbard  
 Ian Gibbard  
 Margaret Goldby  
 Shirley Goldenberg  
 Lillian Gordon  
 Ethel Gorlick  
 In Honour of Beryl Elizabeth  
 Trimming-Green  
 Carol Greenwood  
 Christopher G. Guest  
 Cathy Hale  
 Elizabeth D. Hamilton  
 Daniel Hanowski  
 Doris Hansen  
 Helen Phebe Hatton  
 Sharyl Haynes  
 Lenard Hayward  
 Suzanne Hearn  
 Robert I. Hendy  
 Grant Hern  
 Joan R. Hickey  
 Barbara Hill  
 David and Louise Hilson  
 Timen P.Ho and Ling H. Ho-Lai  
 Frances M. Holland  
 A. D. Holt  
 Bill and Karina Hope  
 Joan Pui-Ying Hosang  
 Margaret J.H. Howitt  
 Peter and Dalit Hume  
 Glenn Hunnings  
 Tommasino-Timpano Iozzo  
 Joan I. Jackson  
 Simon L. Jackson  
 Margaret Jenkins  
 Agnes Jenkinson  
 Nancy Jennings  
 Elspeth A. Johnson  
 Fran Johnston  
 Barry Jones  
 Lee-Anne Kant  
 Jeff Karl  
 Diane Karnay and Stuart Bollefer  
 Carla Keel  
 Grace Kelly  
 Nora Kent  
 Kathryn Kernohan  
 Andrea Kinch  
 Neville and Lorraine Kirchmann  
 Paula Kirsh

Selwyn and Pippa Kossuth  
 Sherry Kou  
 Vito and Catherine Labate  
 Margaret, Audrey and James  
 Laidler  
 Harold Lane  
 Colin Languedoc  
 James and Moira Lawrence  
 Barry Lebow  
 Connie Lee  
 Joan and Bob Lehman  
 Kathleen D. Leslie  
 Charles E. Letman  
 Daniel Lichtman  
 Meryl Lindale  
 Irene M. Lloyd  
 Audrey Loeb and David Ross  
 Margaret Jane Logan  
 Marija Loncar  
 Maria Loschiavo  
 Rita Louidor  
 Charles MacAllister  
 John Macdonald  
 Mr. and Mrs. John D. Mackay  
 William MacLaren  
 John and Gail MacNaughton  
 John C. Marshall  
 Robert Martin  
 Antonio and Seli Masegosa  
 Dana Maslic  
 Aureade Massey  
 Jean Matlow  
 Doris McCartney  
 Joyce L. McCathie  
 Janice McDonald  
 R. A. Guy McGuire  
 William George McIntyre  
 Paul McNab and Mary  
 Collins-McNab  
 Beverly McRae  
 Elizabeth Meldrum  
 Steve Merker and Cathy Buchanan  
 Louis Michael  
 Rosa Milano  
 Barbara Jean Miles  
 George Miljevich  
 James Miller  
 Patricia Miller  
 Ruth M. Miller  
 Ruth Milne  
 S. Milne  
 Rita and Gerald Misner  
 John K. Mitchell  
 Lois Mitchell  
 Carla Monk  
 Doris J. Moore

Harold A. Morden  
 Eleanor Morgan  
 Brad Morris  
 Carol Morrison  
 Marlene Morriss-Taylor  
 Miriam Mozes  
 June Murdoch  
 Freda Ariella Muscovitch  
 Margaret & William Myers  
 Jill and Reed Nelson  
 Susan Newman  
 Doris Noftall  
 Pamela and Donald North  
 Aimee O'Connor  
 Manuel Oliveira  
 Marshal and Tina Partnoy  
 John Patterson  
 Colleen Peacock  
 Brian Pecic  
 Constance Peters  
 Myta Peters  
 Stan and Helen Petrowski  
 Robert L. Pidgeon  
 Gertrude Piggott  
 Margaret Pollard  
 Sofia Polyanovsky  
 Margaret Porteous  
 Mary E. Porter  
 Karen M. Potter  
 Clare Price  
 Bernice Elizabeth and Allan Ross  
 Profit  
 Linda Puma  
 Abel Quintal  
 Robert S. Rawlings  
 Bernie Rees  
 John Reilly  
 Gladys Rennie  
 Edna Reynolds  
 Lionel and Helaine Robins  
 Charles H. and Kathleen A.  
 Robinson  
 Betty Ross  
 Annice H. Rothbart  
 Coleman Rotstein  
 Ross and Gwenda Roxburgh  
 Therese Roy  
 Marci J. Rubinoff  
 Barbara E. Russell  
 Ruth E. Russell  
 Patricia Sauerbrei  
 James H. (Bert) Scott  
 Frank and Red Selke  
 Idola G. Semple  
 Naju B. Shroff and Keki B. Shroff  
 Antonio Sicilia

Margaret Simmons  
 Graham T. Skells  
 Linda Sky Grossman  
 Thomas Smith  
 Helen Stark  
 Annabelle Stephens  
 D. Eleanor Stephenson  
 Morag L. Stewart  
 Ian M. Stobart and Norma Stobart  
 Elsa and Ted Stringer  
 Shannon and Micheal Stuart  
 Ann D. Sutton  
 Dorothy Sutton  
 Richard F. Tayler  
 Douglas A. Taylor  
 Tina Tehranchian  
 Helen Tennyson  
 Irmgard Theegarten  
 Gai Thomas  
 Nelson Tilander  
 Frederick Tiley  
 Joan Tilt  
 Mildred Trachtenberg  
 Jerry Trestik  
 Jackie Tuffin  
 Pat Nichols and Bob Tundermann  
 Belal Uddin  
 John and Tess Van Netten  
 Joseph Vannot  
 Lou Vigoda  
 Nancy J. Vivian  
 John Paul Watman  
 Lisa L. Weaver  
 Sophie Weimert  
 Vanessa Wellwood  
 Lawrence Wert  
 Hazel Westlake  
 Mary E. Whitaker  
 Clyde Shepard Whitham  
 Linda Whyte  
 Charles T. Wilson  
 Debra Wilson  
 Norma and Sharon Wilson  
 Sharon Wilson  
 Mary Winter  
 Jonathan Wisebrod  
 Susan McLean Woodburn  
 Donald and Janice Woodley  
 Betsy Wright  
 William A. Wright  
 Donald A. Wylie  
 Morden S. Yolles  
 Ginette Young  
 Chung-Fu Yu  
 Valentina Zatskoy Loper  
 John Zeger



# Named expendable funds

- ABC Group Donation Fund  
ABC Group Inc. Ambulatory Infusion Pump Fund  
Abraxis BioScience Fellowship Fund  
Adelson Foundation Fund for Ovarian Cancer Research  
Agnico-Eagle Research Fund  
Al Hertz Centre for Palliative and Supportive Care Fund  
Allan Kerbel Trust Fund  
Alli's Journey Fund  
Amelia Plastina Breast Cancer Research and Equipment Fund  
Ann and Irving Storfer Lymphoma Research Fund  
Ann Storfer Ironman Fund  
Anna-Liisa Farquharson Kidney Cancer Research Fund  
Asaro Family Lymphoma Fellowship Fund  
Barnett Music and Art Program Fund  
Barrie Rose Fund  
Barry and Susanne Cooper Family Fund  
Ben and Hilda Katz Charitable Foundation Fund  
Benny Libman Patient Care Fund  
Bette Johnston Cooperative Student Scholarship Fund  
Betty Mendelssohn Kalmanasch Medical Research Fund  
Betty Meretsky Patient Care Fund  
Blaine Richard Stein Fund  
Bluma Appel Palliative Care Project Fund  
Boehringer Ingelheim MP Innovation Project Fund  
Boutillier Family Triple Negative Breast Cancer Research Fund  
Bram Appel Fund for Molecular Diagnostics in Ovarian Cancer  
Bras Family New Drug Development Program Art Fund  
Bras Family New Drug Development Program Fund  
Brian Ellies Esophageal Cancer Prevention Fund  
Brian Pendleton and Chad Goldman Ovarian Cancer Fund  
Bruce Galloway Fund in Head and Neck Cancer Research  
Bush International Fellowship Fund  
Campbell Family Cancer Research Institute Fund  
Campbell Family Institute for Breast Cancer Research Fund  
Canadian Conference of Asbestos Workers Fund  
Canary Foundation Fallopian Tube Project Fund  
Carmel Derdaele Breast Cancer Research Fund  
Catherine Proulx-Simon Fund  
Celgene Fellow in Myeloma Research Fund  
Charles and Marilyn Gold Family Foundation Fund  
Charles Krowitz Burkitt's Lymphoma Research Fund  
Christopher 'Chip' Trueman Fund for Esophageal Cancer Research  
Community Interlink Fund  
Concetta Guglietti Most Wanted Fund for Gynecological Cancer  
Cure for Lung Cancer Team Fund  
Daniel Alan Sheehan Brain Tumour Research Fund  
Daniel Roncari Prostate Cancer Research Fund  
Daryl Rubinoff Fund  
David and June Anne Melnik Prostate Patient Support Fund  
David and Paula Butterfield Ovarian Cancer Database Fund  
David and Sharon Aello Skull Base Fund  
David and Sylvia Cape Breast Cancer Research Fund  
David Cornfield Melanoma Research Fund  
Derek Russell Fund for Clinical Trials Nursing  
Desmond and Pamela O'Rourke Drug Development Fund  
Diane Lanthier Nursing Care Fund  
Discovery Clinical Research Fund  
Domenic Dell'Elce Fund  
Donald J. Young Fund  
Donati Family - St. Michael's Majors Ovarian Cancer Fund  
Dr. Annie Smith Bear Fund for Ovarian Cancer  
Dr. B. Zanke Oncology Research Fund  
Dr. Geoffrey R. Conway Chemotherapy Fund  
Dr. J. Bacher Golf Tournament Fund  
Dr. John Goldberg Fund  
Dr. Jozef Straus Fund  
Edie and Eric Yolles Cell Therapy Research Fund  
Elana Waldman Fund  
Elizabeth M. Walter Patient Education Fund  
Elsa and Ted Stringer Fund  
Erin Belman Fund  
Estelle Craig Family Fund  
Eva Schutz Fund for Breast Cancer Research  
Eve Corrigan Cancer Research Fund - Leukemia  
Eve Corrigan Cancer Research Fund - Psychosocial  
Fidani Family Fund  
Fire Fighters' Cancer Research Fund  
Frank A. Ragona Fund  
Freed Family Fellowship Fund  
Freed Family Fund  
Friends for Life Fund  
Friuli Cancer Research Academic Exchange Program Fund  
Gadler, Lam, Pellegrino Palliative Care Fund  
Gail Gordon Oliver and Family Fund for Breast Cancer  
Gattuso Rapid Diagnostic Centre Fund  
General Electric Canada Inc. Fund  
George A. Cohon Fund for Reconstructive Surgery for Prostate Cancer  
Gerald and Paula Kirsh Family Fund  
Gerald J. Goldenberg Fund for Pancreatic Cancer Research  
Gerald M. Soloway Prostate Cancer Research Fund  
Gerald Siegel Fund for Pancreatic Cancer Research  
Gerry & Nancy Pencer Brain Trust Fund  
Gerry Ruby Fund  
Gift of Life Fund  
Gift of Love (G.O.L.F.) Fund  
Giovanni and Concetta Guglietti Family Cancer Fund  
Goldie Risenman Fund  
Gordon F. Mutch Research Fund for Leukemia  
Gordon Tozer Head and Neck Cancer Bio-Clinical Anthology Fund  
Greenberg-Ritchie Fund  
Greenpark Blood Transfusion Unit Fund  
Gucciardi Family Fund for Cell Therapy  
Harley Ulster and Cindy Leder Multiple Myeloma Research Fund  
Harold Niman Prostate Research Fund  
Harry Littler Cancer Research Fund  
Hatch Family Fund  
Healing Journey Program Fund  
Helen and Irving Davis Fund  
Hertz Fund for Disorders of Vestibular Function  
Hibiscus Fund for Hope  
Hillary Firestone Ovarian Cancer Research Fund  
Ian and Anne Devine Fund  
Ian Lawson Van Toch Cancer Informatics Fund  
Ice Sports Centre Etobicoke Tournament Fund  
Ida Rubinoff Patient Support Fund  
Ilario Caranci Leukemia Research Fund  
Imperial Oil Foundation Mesothelioma Research Fund  
International Cancer Research and Education Fund  
Isabel Koffman Fund for Pancreatic Cancer Research  
Issie's Quest for Ovarian Cancer Research Fund  
J. David and Jan Crichton Fund  
J. Richard and Dorothy Shiff Fund  
Jack and Esther Cole and Family Prostate Centre Fund  
Jack and Rose Wine Leukemia Research Fund  
Jack Cole Prostate Centre Fund  
Jack Elie Memorial Tournament Fund  
Jack Weinbaum Prostate Prevention Fund  
Jacqueline Seroussi Foundation Fund  
James Kinnear Fund  
Janet Rosen Fund  
Jennifer Evanshen Fund  
Jesse and Julie Rasch Foundation Fund  
Joan and Weldon Levine and Family Fund for Myeloma Research  
Joe's Team Fund for Translational Research  
John and Nina Cassils Fund  
John Finlay Oncology Fund  
John Fortney Party Fund  
John L. Hickey Fund  
John Steinberg Fund  
Joseph H.M. Wood Chemotherapy Research Fund  
Journey to Heal Fund  
June Anne and David Melnik Breast Cancer Research Fund  
Karen Morton Fund  
Laugh Lines Fund  
Laura Kathleen Gray Research Fund  
Lee China Exchange Fund  
Lee Greenspoon Gastrointestinal Cancer Research Fund  
Levelling the Playing Field Fund  
Libby and Michael Goldgrub Gynecological Cancer Research Fund  
Lily Silver Magic Castle Fund  
Linda and Marvin Barnett Fund

Lisa Cristine Brave Heart Fund  
 Lousie Khalatbari Nozari Fund  
 Lucky Power Memorial Fund  
 Lusi Wong Lung Cancer Early Detection Research Fund  
 Lynne Kagan Fund  
 Maria De Souza Knowledge Transfer Centre for Oncology Nursing at PMH  
 Marie Thompson Fund  
 Marilyn Barker Paulson Fund for Children with Brain Cancer  
 Marilyn Green Melanoma Research Fund  
 Marilyn Ricci Cancer Pain Control Fund  
 Marilyn Van Stone Foundation Fund  
 Marvin and Linda Barnett Leukemia Fund  
 Mary Hooley Education Fund  
 Master Insulators Association of Ontario Inc. Fund  
 Max Tanenbaum Garden Fund  
 Max Tanenbaum Sculpture Garden Fund  
 McDermott Patient Education Fund  
 Menkes Family Innovation Fund in Thoracic Surgical Oncology  
 Michael Albert Garron Fund  
 Michael J. Dickinson Endoscopic Equipment Fund  
 Michael Ryan Leal Fund  
 Michael Wise Memorial Fund  
 Mona Garbuz Memorial Fund for Melanoma Research  
 Motorcycle Ride for DAD Fund  
 MPD Research Fund  
 Muzzo Family Minimally Invasive Surgical Oncology Program Fund  
 Muzzo Family Robotics Program Fund  
 Nadi Meir Fund  
 Nathan and Sara Goldlist and Family Fund  
 National Pancreatic Cancer Canada Foundation Fund  
 Nora Rudnick Ovarian Cancer Research Fund  
 Palliative Pacers Fund  
 Pamela Mary Hosang Ovarian Cancer Research Fund

Paolo Ardizzi Bone Marrow Transplant Fund  
 Patricia J. Myhal Pancreatic Cancer Research Fund  
 Patrick Avison Memorial Fund  
 Patrick Hodgson Family Research Fund  
 Patrick Moore Leukemia Research Fund  
 Paul and Rhonda Krandel Fund  
 Paul Finger Fund for Ocular Oncology Bioinformatics  
 Pearl Banks Fellowship in Melanoma Research and Patient Care Fund  
 Pencer Centre PFAC Fund  
 Penny Benjamin Fund for Caregiver Relief  
 Petersen/ Turofsky Head and Neck Supportive Care Fund  
 Philip Mincey Fund  
 Philip Orsino Cell Therapy Translational Research Fund  
 Phyllis Hantho Breast Cancer Research Fund  
 PMH/UBC Cancer Joint Venture Early Detection of Ovarian Cancer Research Fund  
 Pollen/Reinholdt Fund for Cancer Research  
 Posluns Family Fund  
 Project Cure Paola's Fund  
 Pusateri's Adult After Care Fund  
 R. M. Saggar Fund  
 Race Against Cancer Fund  
 Ralph Fisher Fund  
 Rebecca's Hope Leukemia Research Fund  
 Richard Wookey Prostate Cancer Research Fund  
 Robert V. Brady Award Fund  
 Roche Fellowship in Drug Development  
 Ronald Buick Symposium Fund  
 Ronald Dunn and Ingrid Gadsden Fund for the Benefit of Nurses on 14A  
 RSM Richter Breast Cancer Research Fund  
 Sam Sniderman and Janet Mays Ovarian Cancer Fund  
 Samuel Family Foundation CT/PET Centre Research Fund  
 Samuel Manu-Tech Inc. Fund  
 Sandra Foyston Patient Education Fund  
 Sanofi-Aventis Fellowship Program Fund

Sara Ferlito Fund  
 Shirley Auslander Peace Angel Fund  
 Shoppers Drug Mart Women's Cancers Research Fund  
 Slavens Family Fund  
 Spin 180 Ovarian Cancer Research Fund  
 Spring Fund in Honour of Frank and Brenda Spring  
 Stella Ruth Feitelson Patient Education Fund  
 Stephen Duviner Pancreatic Cancer Research Fund  
 Steven Hoffman Fellowship in Molecular Genomics Expendable Fund  
 Sue Bristow Leukemia Fund  
 Suncor/Sunoco Gynecologic Oncology Fund  
 Susan Grange Advanced Simulation Program Fund  
 Tara Fund  
 Taylor Family Patient Education Fund  
 The Al Hertz Urgent Care Facility Fund  
 The Alofs Family Fund  
 The Beckie Fund for Breast Cancer Research  
 The Carlo Fidani Foundation Fund  
 The Gary Bluestein Charitable Foundation Cell Therapy Fund  
 The Kelly Silverstein Fellowship Fund  
 The Lo Family Fund for Leukemia Research  
 The Lyon Share Contribution Fund  
 The Michele Temple Melanoma Research Fund  
 The Nicole Nardi Fund  
 The Philip Lavorgna Life Over Lymphoma Fund  
 THE QUILT Breast Cancer Survivorship Fund  
 The RACH Fund  
 The Zoe Springer Memorial Fund  
 Tito and Maria Sansalone Fund  
 Toronto Fashion Show Fund  
 U of T Faculty of Dentistry Class of 2010 Fund  
 Vera Frantisak Fund  
 Wallace and Margaret McCain Fund  
 Wharton Fund for Head and Neck Cancer Research  
 Yasmin Bhaluani Ovarian Cancer Fund

# Named endowed funds

## Those Supporting Programs

Robert and Maggie Bras and Family New Drug Development Program

## Those Supporting Awards

Abate Radiation Therapy Prize Fund  
 Fritz Spiess Research Award Fund  
 Gerald Kirsh Humanitarian Award Fund  
 Harold E. Johns Research Prize  
 Robert G. Matthews Cancer Research and Education Fund  
 The Rabbi Joseph and Doris Kanner Fund

## Those Supporting Lectureships

Bierstock Family Lectureship in Prostate Cancer  
 Douglas Bryce Education and Research Fund  
 Dr. Clifford Ash Lecture  
 E.A. McCulloch Lectureship

Philippa Harris Annual Lecture  
 Richard H. Grimm Lectureship in Head and Neck Oncology  
 Wharton Lectureship in Head and Neck Cancer

## Those Supporting Fellowships

Al Hertz Family Foundation Fund  
 Asaro Family Lymphoma Fellowship  
 Drs. Vera Peters and R.S. Bush Fellowship in Radiation Oncology  
 Edith Kirchmann Fellowship  
 George Knudson Memorial Fellowship  
 Gerald and Sheila Hatch Fellowship  
 Helena Lam Fellowship in Cancer Research  
 Michael V. and Wanda Plachta Fellowship  
 Mildred Goldberg Fellowship  
 N.B. Keevil Fellowship in Translational Research  
 Oberlander Fellowship in Lung Cancer Research

Steven Hoffman Fellowship in Molecular Genomics  
 The Brian Steck Leukemia Research Fund

## Those Supporting Education

Monica Wright Roberts National Breast Cancer Endowment Fund  
 Phyllis Smith Nursing Education Fund  
 Sylvia and Louis Lockshin Patient Education Program Fund  
 Vera McDermott Patient Education Fund

## Those Supporting Professorships

Bergsagel Visiting Professorship Fund  
 Helen M. Cooke Professorship Fund

## Those Supporting Patient Care

Ask Ethel Fund



Gladys M. Davis Patient Services Fund  
 Jeremy A. Oliver Palliative Care Endowment Fund  
 John Russell Koshan Hibiscus Fund for Hope  
 Junior League of Toronto Pediatric Radiation Fund  
 Lynn King Palliative Care Fund  
 Morris and Marcia Kwinter Fund  
 Morrissey-Copping Palliative Care Endowment Fund  
 Shawn's Miracle Fund  
 Pencer Centre Patient and Family Advisory Committee Fund

### Those Supporting Research

Charles Krowitz Endowment Fund for Burkitt's Lymphoma Research  
 Dr. Joseph K. McConnon Fund  
 Dr. Jane Poulson Breast Cancer Research Fund  
 TD Fund for Medical Discovery  
 Albert Edward Rostern Mesothelioma Research Fund  
 Barbara Sharpless Breast Cancer Research Fund  
 Susan E. Crerar Ovarian Cancer Early Detection Fund  
 Tehmi Boman Shroff Fund in Multiple Myeloma Research  
 Honourable Willard Z. Estey Fund  
 William and Dorothy Drevnig and Family Ovarian Cancer Research Fund  
 Mindy Kirsh Endowment Fund  
 Ryder MacDougall Family Fund  
 Tony Pennella Fund  
 Margaret Mary Vivian Endowment Fund  
 Norman Latowsky Leukemia Fund  
 Edie and Eric Yolles Research Fund  
 Harley Ulster and Cindy Leder Multiple Myeloma Fund  
 John and Esther Loewen Family Fund  
 Khurshed Sanjana Multiple Myeloma Research Fund  
 Guthrie Family Fund  
 Dalia McKie Endowment Fund  
 Nizar and Gulzar Kanji Fund  
 Pearl Banks Family Endowment in Melanoma Research and Patient Care Fund  
 Philip and Terry Browman Ovarian Cancer Research Fund  
 Philip Lavorgna Life Over Lymphoma Endowment Fund

Shiraz Bagli Memorial Fund for Basic Research in Ovarian Cancer  
 Valerie Dickson Fund  
 Val Trypuc Sarcoma Research Fund  
 Glenn and Marilyn Hunnings Fund in Haemopoiesis/Lymphopoiesis Research  
 John Purkis Fund for Lung Cancer Research  
 Freda Ariella Muscovitch Ovarian Cancer Research Fund  
 Lyndsay, Joey and Sam Lyons Fund  
 Paola Colozza Fund for Drug Discovery  
 Gail Eisen Pancreatic Cancer Research Fund  
 Cohen and Morrison Pathology Research Fund  
 Friuli Cancer Research Academic Exchange Endowment Fund  
 Edward Futerman Leukemia Research Fund  
 Mary Pawlyk Fund for Research into Genitourinary Malignancies  
 Mary Pawlyk Fund for Research into Lung Cancer  
 Carolyn Budovitch Brain Tumour Research Endowment Fund  
 Elizabeth M. Francis Fund  
 Jane and Peter Eby Fund  
 JCB Grant Cancer Research Fund  
 Teddy Orenstein Research Fund  
 Beatty Biological Research Fund  
 Bartley Bull Clinical Research Fund  
 Gibson Clinical Research Fund  
 Dorothy Gordon Buck Endowment Fund  
 Philip Torno Cancer Research Endowment Fund  
 George Knudson Memorial Fellowship Fund  
 Eckler Research Endowment Fund  
 Florence Winberg Endowment Fund  
 Spooner Family Endowment Fund  
 Eleanor and Burnett Thall Research Fund  
 Margaret Pollard Research Fund  
 George and Kathleen Vice Research Fund  
 Joseph Robert Russell Research Fund  
 Robert Visagie Bone Marrow Transplant Fund  
 Elma Pearl Pinder Research Fund  
 Donna Steinberg Lung Cancer Research Fund  
 Joanna Lai Fund  
 Abraham, Ethel and Jackie Richmond Research Fund  
 Ann Rom Research Fund  
 Mary C. Conway Research Fund  
 Katharine S. McLeod Research Fund  
 Fielding Family Research Fund  
 C. Victor Secrett Research Fund

Terry Watson Research Fund  
 Mildred Eady Research Fund  
 Marion H. McRobert Research Fund  
 Lee K. and Margaret Lau Breast Cancer Research Fund  
 Jean E. McCulloch Research Fund  
 Jean E. Smith Research Fund  
 Harold E. Yeo Research Fund  
 Elizabeth Duke Research Fund  
 Hubert B. Sceats Research Fund  
 Catherine M. Wanless Research Fund  
 Helen V. Crawford Research Fund  
 Shirley Mak Breast Cancer Research Fund  
 Edward E. Wise Research Fund  
 Pak Heng Chu Research Fund  
 McDowell-Silcox Family Research Fund  
 Adele E.G. Curry Research Fund  
 M. Ann MacMillan Research Fund  
 Deirdre Clement Research Fund  
 Gwendolyn H. Riding Research Fund  
 W.J. Collins and J.A. McNab Research Fund  
 Melissa Ann Katzman Cancer Research Fund  
 Harry and Eleanor O'Neill Research Fund  
 Joseph Lorne Garvin Research Fund  
 Dong Luong Huynh Research Fund  
 Girling/MacLellan Research Fund  
 Barrick Gold Corporation Prostate Research Fund  
 Bulhoes Head and Neck Fund  
 Roy Arthur Fawcett Cancer Research Fund  
 Paul MacDonald Fund  
 Walter B. Pape Fund  
 Reid-Weston Family Leukemia research Fund  
 Enid Hildebrand Cancer Research Fund  
 Ernest A. and Evelyn C. Byworth Trust for Research Fund  
 Leslie Zeev Mozes Fund  
 Gerry and Nancy Pencer Brain Tumour Centre Endowment Fund  
 Sylvia Jaychuk Pancreatic Cancer Research Fund

### Other Funds

Dr. Joseph Neil Monteith Dunsmore Fund  
 John L. Hickey Endowment Fund  
 Max Tanenbaum Music Program Fund



## Thank you Frederick Faircloth

For nine years now, Frederick has been the face of The Princess Margaret Hospital Foundation—greeting patients and their families at the Foundation Desk in the main lobby of the hospital and answering their questions. It's a very busy desk when Princess Margaret Hospital lottery tickets are for sale, and he also raises much needed funding for the hospital by selling recipe books, lunch bags and key chains that display the hospital logo.

# Financials

March 31, 2011

The accompanying financial statements of The Princess Margaret Hospital Foundation were prepared by management in accordance with generally accepted accounting principles.

Management is responsible for the integrity and objectivity of the financial statements and has established systems of internal control which are designed to provide reasonable assurance that assets are safeguarded from loss or unauthorized use and to produce reliable accounting records for the preparation of financial information.

The Board of Directors is responsible for ensuring that management fulfills its responsibility for financial reporting and internal control. The Board exercises its responsibilities through the Investment Committee, composed of members of the Board, who meet regularly with representatives of management and with the external investment managers and consultants, to monitor the performance of the investment portfolio. The Audit & Accountability Committee comprised of members of the Board and the community, meets regularly with management to monitor the financial activity of the Foundation together with the functioning of the accounting and control systems. This Committee also meets with management and the external auditors to review the results of the auditing activity.

The external auditors have conducted an independent audit, in accordance with generally accepted standards, and have expressed their opinions on the financial statements. Their report outlines the nature of their audit and their opinion on the fairness of the financial statements of The Princess Margaret Hospital Foundation and the accounting principles followed in management's preparation thereof.



John H. Bowey, FCA  
Chairman, Board of Directors



Paul Alofs  
President & CEO



Glenn Ives  
Chair, Audit & Accountability  
Committee



Asha Raheja, CMA  
Treasurer



## INDEPENDENT AUDITORS' REPORT

To the Members of  
**The Princess Margaret Hospital Foundation**

### REPORT ON THE FINANCIAL STATEMENTS

We have audited the accompanying financial statements of **The Princess Margaret Hospital Foundation**, which comprise the balance sheet as at March 31, 2011 and the statement of revenue, expenses and changes in fund balances for the year then ended, and a summary of significant accounting policies and other explanatory information.

#### Management's responsibility for the financial statements

Management is responsible for the preparation and fair presentation of these financial statements in accordance with Canadian generally accepted accounting principles, and for such internal control as management determines is necessary to enable the preparation of financial statements that are free from material misstatement, whether due to fraud or error.

#### Auditors' responsibility

Our responsibility is to express an opinion on these financial statements based on our audit. We conducted our audit in accordance with Canadian generally accepted auditing standards. Those standards require that we comply with ethical requirements and plan and perform the audit to obtain reasonable assurance about whether the financial statements are free from material misstatement.

An audit involves performing procedures to obtain audit evidence about the amounts and disclosures in the financial statements. The procedures selected depend on the auditors' judgment, including the assessment of the risks of material misstatement of the financial statements, whether due to fraud or error. In making those risk assessments, the auditors consider internal control relevant to the entity's preparation and fair presentation of the financial statements in order to design audit procedures that are appropriate in the circumstances, but not for the purpose of expressing an opinion on the effectiveness of the entity's internal control. An audit also includes evaluating the appropriateness of accounting policies used and the reasonableness of accounting estimates made by management, as well as evaluating the overall presentation of the financial statements.

We believe that the audit evidence we have obtained is sufficient and appropriate to provide a basis for our audit opinion.

#### Opinion

In our opinion, the financial statements present fairly, in all material respects, the financial position of **The Princess Margaret Hospital Foundation** as at March 31, 2011 and the results of its operations and its cash flows for the year then ended in accordance with Canadian generally accepted accounting principles.

### REPORT ON OTHER LEGAL AND REGULATORY REQUIREMENTS

As required by the Canada Corporations Act, we report that, in our opinion, Canadian generally accepted accounting principles have been applied on a basis consistent with that of the preceding year.

Toronto, Canada,  
June 22, 2011.

*Ernst + Young LLP*

Chartered Accountants  
Licensed Public Accountants

**The Princess Margaret Hospital Foundation**  
 Incorporated under the laws of Canada

**BALANCE SHEET**

As at March 31

	2011 \$	2010 \$
	[000's]	
<b>ASSETS</b>		
Cash and cash equivalents <i>[note 3]</i>	52,598	53,070
Accounts receivable	1,669	88
Investments, at market <i>[note 4]</i>	310,749	265,803
Capital assets, net <i>[note 5]</i>	118	—
Other assets <i>[note 6]</i>	8,235	7,452
	<b>373,369</b>	<b>326,413</b>
<b>LIABILITIES AND FUND BALANCES</b>		
<b>Liabilities</b>		
Due to University Health Network <i>[note 17][f]</i>	19,962	19,334
Accounts payable and accrued liabilities	1,331	1,275
Deferred revenue <i>[notes 11, 12 and 14]</i>	29,452	21,222
<b>Total liabilities</b>	<b>50,745</b>	<b>41,831</b>
Commitment <i>[note 18]</i>		
<b>Fund balances</b>		
General Fund	10,135	10,161
Restricted Fund <i>[note 7]</i>	194,788	165,769
Endowment Fund <i>[note 8]</i>	117,701	108,652
<b>Total fund balances</b>	<b>322,624</b>	<b>284,582</b>
	<b>373,369</b>	<b>326,413</b>

See accompanying notes

On behalf of the Board:



Director



Director

The Princess Margaret Hospital Foundation

STATEMENT OF REVENUE, EXPENSES AND CHANGES IN FUND BALANCES

Year ended March 31

	General Fund		Restricted Fund		Endowment Fund		Total	
	2011	2010	2011	2010	2011	2010	2011	2010
	\$ [000's]	\$	\$ [000's]	\$	\$ [000's]	\$	\$ [000's]	\$
Gross fundraising revenue [notes 9 and 17[e]]	6,528	5,219	67,028	62,058	1,812	3,253	75,368	70,530
Direct fundraising expenses [notes 11 and 12]	(1,984)	(1,525)	(11,290)	(10,783)	—	—	(13,274)	(12,308)
Net fundraising	4,544	3,694	55,738	51,275	1,812	3,253	62,094	58,222
Gross lottery revenue [note 14]	—	—	52,210	50,206	—	—	52,210	50,206
Direct lottery expenses [note 14]	—	—	(37,060)	(38,457)	—	—	(37,060)	(38,457)
Net lottery	—	—	15,150	11,749	—	—	15,150	11,749
<b>Net fundraising and lottery revenue</b>	<b>4,544</b>	<b>3,694</b>	<b>70,888</b>	<b>63,024</b>	<b>1,812</b>	<b>3,253</b>	<b>77,244</b>	<b>69,971</b>
Investment income [note 15]	13,400	25,103	5,841	6,264	3,549	12,291	22,790	43,658
<b>Net revenue, including investment income</b>	<b>17,944</b>	<b>28,797</b>	<b>76,729</b>	<b>69,288</b>	<b>5,361</b>	<b>15,544</b>	<b>100,034</b>	<b>113,629</b>
General fundraising and administrative expenses [note 17]	6,443	5,561	1,227	1,183	—	—	7,670	6,744
<b>Excess of revenue over expenses before grants</b>	<b>11,501</b>	<b>23,236</b>	<b>75,502</b>	<b>68,105</b>	<b>5,361</b>	<b>15,544</b>	<b>92,364</b>	<b>106,885</b>
Grants								
Ontario Cancer Institute/Princess Margaret Hospital [note 17[a]]	—	1	54,322	53,817	—	—	54,322	53,818
<b>Excess of revenue over expenses and grants for the year</b>	<b>11,501</b>	<b>23,235</b>	<b>21,180</b>	<b>14,288</b>	<b>5,361</b>	<b>15,544</b>	<b>38,042</b>	<b>53,067</b>
Fund balances, beginning of year	10,161	4,187	165,769	137,746	108,652	89,582	284,582	231,515
Interfund transfers [note 16]	(11,527)	(17,261)	7,839	13,735	3,688	3,526	—	—
<b>Fund balances, end of year</b>	<b>10,135</b>	<b>10,161</b>	<b>194,788</b>	<b>165,769</b>	<b>117,701</b>	<b>108,652</b>	<b>322,624</b>	<b>284,582</b>

See accompanying notes

# The Princess Margaret Hospital Foundation

## NOTES TO FINANCIAL STATEMENTS

[in thousands]

### 1. PURPOSE OF THE ORGANIZATION

The Princess Margaret Hospital Foundation [the "Foundation"] is incorporated under the Canada Corporations Act. The Foundation was established to solicit, receive and maintain funds and to apply these funds to improve and enhance cancer research, professional education and patient care activities provided by the Ontario Cancer Institute/Princess Margaret Hospital ["OCI/PMH"], which are part of the University Health Network ["UHN"].

The Foundation is a public foundation registered under the Income Tax Act (Canada) [the "Act"] and, as such, is exempt from income taxes and able to issue donation receipts for income tax purposes, under Registration Number 88900 7597 RR 0001.

### 2. SUMMARY OF SIGNIFICANT ACCOUNTING POLICIES

The financial statements of the Foundation have been prepared in accordance with Canadian generally accepted accounting principles. The following summary of significant accounting policies is set forth to facilitate the understanding of these financial statements:

#### Future changes in accounting policies

In December 2010, the Accounting Standards Board of the Canadian Institute of Chartered Accountants ["CICA"] issued Part III of the CICA Handbook that sets out the accounting standards for not-for-profit organizations that are effective for fiscal years beginning on or after January 1, 2012, with an option to early-adopt. The Foundation is currently evaluating the impact of these standards.

#### Fund accounting

In order to ensure observance of the limitations and restrictions placed on the use of resources available to the Foundation, the accounts of the Foundation are maintained in accordance with the principles of fund accounting. Accordingly, resources are classified for accounting and reporting purposes into funds. These funds are held in accordance with the objectives specified by the donors or in accordance with directives issued by the Board of Directors [the "Board"]. Transfers between the funds are made when it is considered appropriate and authorized by the Board. To meet these objectives of financial reporting and stewardship over assets, certain interfund transfers are necessary to ensure the appropriate allocation of assets and liabilities to the respective funds. These interfund transfers are recorded in the statement of revenue, expenses and changes in fund balances.

For financial reporting purposes, the accounts have been classified into the following funds:

#### [a] General Fund

The General Fund accounts for the Foundation's general fundraising, granting and administrative activities. The General Fund reports unrestricted resources available for immediate purposes.

#### [b] Restricted Fund

The Restricted Fund includes those funds where resources are to be used for an identified purpose as specified by the donor, as stipulated by the fundraising appeal or as determined by the Board.

#### [c] Endowment Fund

The Endowment Fund includes those funds where either donor or internal restrictions require that the principal be maintained by the Foundation on a permanent basis.

## **Investments and investment income**

The investments of the Foundation are recorded at market value. Publicly traded securities are valued based on the latest bid prices. Pooled funds and other investments that are not publicly traded are valued based on values reported by the external investment manager. Short-term securities are valued based on cost plus accrued income, which approximates fair value. Transactions are recorded on a settlement date basis and transaction costs are expensed as incurred. Investment income, which consists of dividends, interest, distributions from pooled funds and realized and unrealized gains and losses, is recorded as revenue in the statement of revenue, expenses and changes in fund balances.

Investment income earned on Endowment Fund or Restricted Fund resources that must be spent on donor-restricted activities is recognized as revenue of the Restricted Fund. Investment income subject to donor restrictions stipulating that it be added to the principal amount of the endowment is recognized as revenue of the Endowment Fund. Unrestricted investment income earned on Endowment Fund, Restricted Fund and General Fund resources is recognized as revenue of the General Fund.

Derivative financial instruments are marked to market, with gains and losses recognized in income in the year in which the changes in market value occur.

## **Foreign currency translation**

Revenue and expenses denominated in foreign currencies are translated into Canadian dollars at the transaction date. Investments and other monetary items denominated in foreign currencies are translated at the year-end rate. Translation gains and losses are included in the statement of revenue, expenses and changes in fund balances.

## **Revenue recognition**

Donations are recorded on a cash basis since pledges are not legally enforceable claims.

Donor-restricted donations for endowment purposes are recognized as revenue of the Endowment Fund. Other donor-restricted donations are recognized as revenue of the Restricted Fund. Unrestricted donations are recognized as revenue of the General Fund.

Lottery and events revenue is recognized in the fiscal year in which the program is concluded. Revenue related to lotteries for which prize draws take place and events take place subsequent to the year end are deferred.

## **Grant recognition**

Grants are recognized when payable.

## **Contributed goods and services**

Contributed capital assets that are transferred to UHN are recognized at their fair market value in the financial statements. Other contributed goods and services are not recognized.

## **Allocation of expenses**

Direct fundraising and lottery expenses represent expenses and costs of any personnel that are directly related to these activities. No costs of personnel in general fundraising or other general fundraising and administrative expenses are included in these balances. General fundraising and administrative expenses are allocated to the Restricted Fund as a percentage of net revenue on special events and a fixed amount determined by the Board for strategic events.

## **Cash and cash equivalents**

Cash and cash equivalents consist of cash deposits and short-term investments with an original term to maturity less than 90 days or able to be cashed on demand. Cash and investments meeting the definition of cash and cash equivalents that are held for investing rather than liquidity purposes are classified as investments.

## Capital assets

Purchased capital assets are recorded at cost. Donated capital assets are recorded at fair value at the date of contribution.

Amortization is provided on a straight-line basis over the estimated useful lives of the assets as follows:

Office equipment	10 years
Computer hardware and software	3 years

## Other assets

Costs directly related to the development of future lotteries and events are presented as other assets when the Foundation can reliably demonstrate that there is a future economic benefit associated with these costs. These costs are expensed over their useful life, which is when the lottery or event is held. Such costs are expensed immediately when there is insufficient evidence that the costs are recoverable.

## Financial instruments

The Foundation is subject to market, currency and interest rate price risks with respect to its investments. To manage these risks, the Foundation has established a target mix of investment types designated to achieve the optimum return with reasonable risk tolerance.

The Foundation has chosen to apply CICA 3861, *Financial Instruments - Disclosure and Presentation*, in place of CICA 3862, *Financial Instruments - Disclosures*, and CICA 3863, *Financial Instruments - Presentation*.

## Employee future benefit plans

The Foundation participates in a multi-employer defined benefit pension plan and non-pension defined benefit plans sponsored by UHN. Contributions to these plans are expensed when due.

## Use of estimates

The preparation of financial statements in conformity with Canadian generally accepted accounting principles requires management to make estimates and assumptions that affect the reported amounts of assets and liabilities and the disclosure of contingent assets and liabilities at the date of the financial statements and the reported amounts of revenue and expenses during the reporting period. Actual results could differ from those estimates.

## 3. CASH AND CASH EQUIVALENTS

Cash and cash equivalents consist primarily of amounts held for the General and Restricted Funds and net funds received in advance related to lotteries and events to be held during the next fiscal year.

## 4. INVESTMENTS

[a] Investments consist of the following:

	2011	2010
	\$	\$
Cash	6,568	569
Short-term investments	3,335	3,491
Canadian bonds	190,584	161,308
Equities		
Canadian	16,435	13,768
US and other foreign	64,997	52,683
	81,432	66,451
Alternative investments	26,067	33,250
Forward foreign exchange contracts	2,763	734
	310,749	265,803

Alternative investments include investments in hedge funds and private capital. The amounts invested in pooled funds have been allocated among the asset classes, based on the asset classes held by the pooled funds.

In order to manage foreign currency exposure, the Foundation has entered into a number of forward foreign exchange contracts with a US bank. At March 31, 2011, there are three contracts maturing on April 4, 2011. One contract allows the sale of CA\$49,380 at an exchange rate of 0.9759. The second contract allows the purchase of US\$22,000 at an exchange rate of 0.9887. The third contract allows the sale of US\$69,900 at an exchange rate of 1.01763. Another contract maturing on July 6, 2011 allows the sale of US\$51,000 at an exchange rate of 0.9776 [March 31, 2010 - one contract with a US bank to sell US\$39,000 on April 7, 2010 at an exchange rate of 1.03397]. The fair market value of these contracts as at March 31, 2011 is a gain of \$2,763 [2010 - \$734].

[b] Investments are managed as two pools:

- Investments related to the Endowment Fund are invested as follows: cash and short-term investments - 5% [2010 - 1%], bonds - 6% [2010 - 10%], equities - 68% [2010 - 61%] and alternative investments - 21% [2010 - 28%].
- Investments related to the General and Restricted Funds are substantially invested in short-term investments and bonds. The fixed income securities in the general and restricted portfolio had a weighted average yield of 5.0% [2010 - 4.71%] and an average term to maturity of 14.4 years [2010 - 10.8 years].

[c] During the year ended March 31, 2011, \$22,000 was transferred to the investment portfolio.

[d] The Foundation has made a commitment to invest \$10,900 in private capital over the next three to five years.

## 5. CAPITAL ASSETS

Capital assets consist of the following:

	2011			2010		
	Cost \$	Accumulated amortization \$	Net book value \$	Cost \$	Accumulated amortization \$	Net book value \$
Office equipment	—	—	—	230	230	—
Computer hardware and software	177	59	118	317	317	—
	<b>177</b>	<b>59</b>	<b>118</b>	<b>547</b>	<b>547</b>	<b>—</b>

Amortization expense recorded in the accounts is \$59 [2010 - \$98]. Capital asset purchases were \$177 [2010 - nil].

## 6. OTHER ASSETS

Other assets consist of the following:

	2011 \$	2010 \$
Future events		
Weekend to End Women's Cancers [note 11]	1,036	1,256
Ride to Conquer Cancer [note 12]	1,884	1,949
Others	98	189
Future lotteries [note 14]	5,217	4,058
	<b>8,235</b>	<b>7,452</b>

## 7. RESTRICTED FUND

The Restricted Fund consists of funds available for spending for priorities in progress at OCI/PMH that are restricted by donors or the Board for the following purposes:

	2011	2010
	\$	\$
<b>Donor-restricted balances</b>		
Restricted for research purposes	115,307	104,284
Restricted for purchase of capital assets	25,096	19,938
Restricted for patient support and other	33,941	28,566
	<b>174,344</b>	<b>152,788</b>
<b>Internally imposed restrictions</b>		
Restricted for research purposes	3,343	2,866
Special reserve	17,101	10,115
	<b>20,444</b>	<b>12,981</b>
	<b>194,788</b>	<b>165,769</b>

## 8. ENDOWMENT FUND

The Endowment Fund consists of externally restricted contributions received by the Foundation where the endowment principal is required to be maintained intact. The Endowment Fund also includes internal resources transferred by the Board to the Endowment Fund, with the intention that the principal be maintained intact. The investment income generated from assets held for endowment purposes must be used in accordance with the various purposes established by the donors or the Board.

Major categories of restrictions on fund balances are as follows:

	2011	2010
	\$	\$
<b>Externally imposed endowments</b>		
Endowments, the income from which must be used for research purposes	83,047	77,894
Endowments, the income from which must be used for other restricted purposes	13,579	12,892
	<b>96,626</b>	<b>90,786</b>
<b>Internally imposed endowments approved by the Board</b>		
Funds restricted for research	9,309	8,798
Funds restricted for other purposes	717	688
Unrestricted funds	11,049	8,380
	<b>21,075</b>	<b>17,866</b>
	<b>117,701</b>	<b>108,652</b>

## 9. GROSS FUNDRAISING REVENUE

Gross fundraising revenue consists of the following:

	<u>General Fund</u>		<u>Restricted Fund</u>		<u>Endowment Fund</u>	
	2011	2010	2011	2010	2011	2010
	\$	\$	\$	\$	\$	\$
Annual programs <i>[note 13]</i>	4,102	3,859	9,050	8,684	303	384
Major gifts and bequests	2,426	1,360	28,932	25,702	1,509	2,869
Weekend to End Women's Cancers <i>[note 11]</i>	—	—	11,127	11,685	—	—
Ride to Conquer Cancer <i>[notes 10 and 12]</i>	—	—	17,919	15,987	—	—
	<b>6,528</b>	<b>5,219</b>	<b>67,028</b>	<b>62,058</b>	<b>1,812</b>	<b>3,253</b>

## 10. ROYALTIES

The Foundation has licensed the Ride to Conquer Cancer to other cancer charities across Canada to support their fundraising efforts. During fiscal 2011, the Ride to Conquer Cancer raised \$42,800 [2010 - \$36,800] gross revenue nationally, including the Toronto event revenue. This has resulted in \$1,181 [2010 - \$968] royalty revenue, to be used for collaborative research projects, which has been included in the Ride to Conquer Cancer fundraising revenue [note 9].

## 11. WEEKEND TO END WOMEN'S CANCERS

During the years ended March 31, 2011 and 2010, the Foundation held a fundraising event, the Weekend to End Women's Cancers. Financial results included in the statement of revenue, expenses and changes in fund balances are as follows:

	2011	2010
	\$	\$
<b>Revenue [note 9]</b>	<b>11,127</b>	11,685
<b>Direct expenses</b>		
Logistics	2,929	3,350
Marketing and other	1,064	1,051
	<b>3,993</b>	4,401
	<b>7,134</b>	7,284

As at March 31, 2011, revenue of \$1,596 [2010 - \$1,669] received during the year ended March 31, 2011 associated with the event to be held in September 2011 has been deferred and recorded in the balance sheet. Costs of \$1,036 [2010 - \$1,256] incurred during the year ended March 31, 2011 have been included in other assets [note 6] in the balance sheet. The results of the event will be recorded as revenue and expenses in the financial statements for the year ending March 31, 2012.

## 12. RIDE TO CONQUER CANCER

During the years ended March 31, 2011 and 2010, the Foundation held a fundraising event, the Ride to Conquer Cancer. Financial results included in the statement of revenue, expenses and changes in fund balances are as follows:

	2011	2010
	\$	\$
<b>Revenue [notes 9 and 10]</b>	<b>17,919</b>	15,987
<b>Direct expenses</b>		
Logistics	4,318	3,733
Marketing and other	1,122	1,562
	<b>5,440</b>	5,295
	<b>12,479</b>	10,692

As at March 31, 2011, revenue of \$5,948 [2010 - \$5,240] received during the year ended March 31, 2011 associated with the event to be held in June 2011 has been deferred and recorded in the balance sheet. Costs of \$1,884 [2010 - \$1,949] incurred during the year ended March 31, 2011 have been included in other assets [note 6] in the balance sheet. The results of the event will be recorded as revenue and expenses in the financial statements for the year ending March 31, 2012.

## 13. PROVINCIAL GRANT

In fiscal 2009, a grant of \$15,000 was announced by the Province of Ontario to support The Anna Maria de Souza Knowledge Transfer Centre for Oncology Nursing. Since the Foundation is acting as a paymaster for this grant, the Province of Ontario will pay the Foundation \$3,000 per year over five years. In fiscal 2011, the third payment of \$3,000 [2010 - \$3,000] was received and \$2,850 [2010 - \$2,850] was paid to UHN who, jointly with Cancer Care Ontario, is administrating the grant. The receipt of the grant from the Province of Ontario and payment to UHN have not been recorded in these financial statements. An amount of \$150 was recorded as annual program fundraising revenue [note 9] in the General Fund representing the Foundation's fee.

## 14. LOTTERIES

During the years ended March 31, 2011 and 2010, the Foundation held two lotteries. Financial results included in the statement of revenue, expenses and changes in fund balances are as follows:

	2011	2010
	\$	\$
<b>Revenue</b>	<b>52,210</b>	50,206
<b>Direct expenses</b>		
Prizes	<b>20,878</b>	20,732
Marketing and other	<b>16,182</b>	17,725
	<b>37,060</b>	38,457
	<b>15,150</b>	11,749

Prior to March 31, 2011, the Foundation committed to carrying out the spring 2011 Princess Margaret Hospital Home Lottery [the "Home Lottery"], which was held in May 2011. As at March 31, 2011, revenue of \$21,058 [2010 - \$14,002] received during the year ended March 31, 2011 associated with the Home Lottery has been deferred and recorded in the balance sheet. Costs of \$5,217 [2010 - \$4,058] incurred during the year ended March 31, 2011 have been included in other assets [note 6] in the balance sheet. The results of the Home Lottery will be recorded as revenue and expenses in the financial statements for the year ending March 31, 2012. The Foundation has a standby letter of credit of \$13,343 that expires on July 11, 2011 obtained in connection with the Home Lottery.

## 15. INVESTMENT INCOME

[a] Investment income earned on the Foundation's assets consists of the following:

	2011	2010
	\$	\$
Interest and dividends	<b>10,581</b>	8,966
Realized gains	<b>4,888</b>	9,063
Net change in unrealized gain on investments	<b>7,841</b>	26,053
	<b>23,310</b>	44,082
Less investment management and custodial fees	<b>520</b>	424
	<b>22,790</b>	43,658

[b] Investment income is allocated among the funds based on the Foundation's capital preservation policy. This policy has the objective of protecting the real value of the endowments by limiting the amount of earned income available for spending and requiring the reinvestment of any income earned in excess of this limit. This preservation of capital is recorded as revenue of the Endowment Fund for externally endowed funds. For internally endowed funds, the preservation of capital is recorded as income of the General Fund and transferred to the Endowment Fund in the statement of revenue, expenses and changes in fund balances. In any year, should net investment income not be sufficient to fund the amount required for spending, the amount that is to be made available for spending is funded by a transfer from the Endowment Fund.

Currently, the income available for spending is set at 4% of the market value of the Endowment Fund balances. An additional 1% is recorded in the General Fund to cover administrative costs.

Investment income recorded in the Restricted Fund represents income earned on endowments where the donor has stipulated that the income must be used for restricted purposes or where there are agreements requiring income to be allocated to restricted funds.

[c] Gains and losses arising from the sale of donated investments that fund specific endowed or restricted funds are recorded in these funds.

- [d] In 2011, investment income earned on investments held for endowments totaled \$10,042 [2010 - \$20,403], of which \$4,341 [2010 - \$14,649] was allocated for the preservation of capital. Of this amount, \$3,549 [2010 - \$12,291] related to externally endowed funds was recorded as investment income of the Endowment Fund. Capital preservation of \$792 [2010 - \$2,358] related to Board endowed funds was recorded as investment income of the General Fund and then transferred to the Endowment Fund.

The amount made available for spending of \$3,802 [2010 - \$3,858] related to externally endowed funds was recorded as income of the Restricted Fund. The amount of \$759 [2010 - \$744] made available for spending related to internally endowed funds was recorded as investment income of the General Fund and then transferred to the Restricted Fund. An amount of \$1,140 [2010 - \$1,152] is included in General Fund investment income related to the funds made available to cover administrative costs.

## 16. INTERFUND TRANSFERS

- [a] Transfers between funds consist of the following:

	<u>General Fund</u>		<u>Restricted Fund</u>		<u>Endowment Fund</u>	
	2011	2010	2011	2010	2011	2010
	\$	\$	\$	\$	\$	\$
Board and donor approved						
re: fund restrictions <i>[note 16[b]]</i>	<b>(9,976)</b>	(14,159)	<b>7,080</b>	12,991	<b>2,896</b>	1,168
Allocation of investment						
income in accordance						
with Board policy <i>[note 15[d]]</i>	<b>(1,551)</b>	(3,102)	<b>759</b>	744	<b>792</b>	2,358
	<b>(11,527)</b>	(17,261)	<b>7,839</b>	13,735	<b>3,688</b>	3,526

- [b] In 2011, the Board approved transfers totaling \$7,080 [2010 - \$12,991] from the General Fund to the Restricted Fund and \$2,896 [2010 - \$1,168] from the General Fund to the Endowment Fund.

The transfers relate to internally imposed restrictions approved by the Board and changes in the designation of funds as directed by donors.

## 17. RELATED PARTY TRANSACTIONS

- [a] During the year, the Foundation funded the following projects carried out at the OCI/PMH and UHN:

	<u>General Fund</u>		<u>Restricted Fund</u>		<u>Endowment Fund</u>	
	2011	2010	2011	2010	2011	2010
	\$	\$	\$	\$	\$	\$
Equipment	—	—	<b>2,490</b>	4,841	—	—
Research	—	1	<b>49,002</b>	47,462	—	—
Construction of centres						
within the hospital	—	—	<b>2,830</b>	1,514	—	—
	—	1	<b>54,322</b>	53,817	—	—

- [b] UHN provides certain services to the Foundation and pays some expenses on behalf of the Foundation. The Foundation reimburses UHN for all direct costs associated with services provided and expenses paid. Administrative expenses include a charge of \$25 [2010 - \$25] paid to UHN for office space, service fees and use of furniture and equipment.
- [c] The Foundation pays certain common expenses on behalf of affiliated foundations and is reimbursed for these expenses. In addition, the Foundation reimburses affiliated foundations for those common expenses incurred by these foundations on behalf of the Foundation.
- [d] Salaries, benefits and certain other expenses are paid by UHN and are reimbursed by the Foundation.

[e] Fundraising includes \$1,396 [2010 - \$1,983] received from affiliated foundations in connection with a donation recorded by those foundations directed by the donor to the Foundation.

[f] Amounts due to UHN are non-interest bearing and due on demand. Transactions between UHN and the Foundation are in the normal course of business and are measured at the exchange amount, which is the amount of consideration established and agreed to by the related parties.

## 18. COMMITMENT

As at March 31, 2011, the Foundation approved plans to make a research grant of \$19,200 to OCI/PMH which will be expensed during the year ending March 31, 2012.

## 19. UNIVERSITY OF TORONTO GRADUATE STUDENT ENDOWMENT

During 1997, the Foundation negotiated an agreement in which a grant of \$3,300 from the Foundation to the University of Toronto [the "University"] was matched equally by the University and the Ontario Government through the Ontario Student Opportunity Trust Fund. This established a \$9,900 endowment to be held by the University for the benefit of graduate students studying with University faculty members located at the OCI/PMH facilities and engaged in cancer research.

The following financial results for the year ended April 30, 2011 were reported by the University to the Foundation:

	<b>Endowment Fund</b>	<b>Expendable Fund</b>
	\$	\$
<b>Balance, at market value, as at April 30, 2010</b>	<b>9,728</b>	<b>602</b>
Investment gain	954	—
Transfer to Expendable Fund	(455)	455
Student awards	—	(199)
<b>Balance, at market value, as at April 30, 2011</b>	<b>10,227</b>	<b>858</b>

## 20. STATEMENT OF CASH FLOWS

A separate statement of cash flows has not been presented since cash flows from operating, investing and financing activities are readily apparent from the other financial statements.

## 21. CAPITAL MANAGEMENT

In managing capital, the Foundation focuses on liquid resources available for operations. The Foundation's objective is to have sufficient liquid resources to continue operating despite adverse financial events and to provide it with the flexibility to take advantage of opportunities that will advance its purposes. The need for sufficient liquid resources is considered in the preparation of an annual budget and in the monitoring of cash flows and actual operating results compared to the budget. As at March 31, 2011, the Foundation has met its objective of having sufficient liquid resources to meet its current obligations.

# Princess Margaret Hospital Foundation efficiency and effectiveness

The economics and accounting for fundraising in Canada is complex and can be challenging to understand.

At The Princess Margaret Hospital Foundation (PMHF), we view our organization as a social enterprise, rather than a not-for-profit. At PMHF, we strive to operate with the efficiency and effectiveness of a private sector leader, but with the vision and mission of a not-for-profit cause. All of us who are fortunate enough to work at PMHF or to volunteer here serve the cause to **Conquer Cancer In Our Lifetime** with a determination and focus that drives a clarity, an efficiency and an effectiveness in everything we do.

## Efficiency

To PMHF, the most important measure of efficiency is net fundraising and lottery revenue per employee. Looking at our fiscal year 2011, net fundraising revenue of \$77.2 million divided by 55 full-time employees results in a net fundraising revenue per employee of \$1.4 million. We believe this to be one of the highest of any of the major foundations in Canada.

Another important measure of efficiency is general fundraising and administrative expenses (the cost of employing staff and other overhead) divided by the net fundraising revenue number. For 2011, this results in a general fundraising and administrative expense percentage of net fundraising revenue of 9.9%, which we believe also speaks to the Foundation's efficiency.

## Lotteries

The monies raised from The Princess Margaret lotteries are critically important to the research program and have indeed helped to fund one of the top 5 cancer research centres in the world.

The two PMHF lotteries have raised net revenue for research of \$15.1 million in fiscal 2011, and a total \$210 million over the past 15 years. The lotteries for The Princess Margaret have provided grants to pay for salaries, laboratory expenses and overhead of a 1,000-person research organization for over a decade.

When it comes to accounting for lotteries, the prizes, marketing and administrative costs are significant. However, the lottery is not a typical fundraising activity. A lottery ticket is a purchase of an opportunity for an individual to win great prizes. It is not a donation and therefore a tax receipt is not issued. Lotteries are provincially-controlled activities and are licensed by the *Alcohol and Gaming Commission of Ontario*.

The cost of prizes, from homes to cars to trips to cash prizes, is significant, but so is the net return to the charity. PMHF purchases all the prizes for the lottery program. This is necessary to provide the quality of the prizes for which The Princess Margaret lotteries are known. We are proud of our market-leading lottery programs and are most grateful for the support our lotteries have received from our community over the years.

## Bibliometric Analysis:

Using address, organization and journal as delimiters, publication and citation data has been extracted from Thomson Reuters Web of Knowledge databases from 2007 to 2009.

Visit [www.pmfh.ca/pdfs/Top5.pdf](http://www.pmfh.ca/pdfs/Top5.pdf) for further details

## The Princess Margaret - Ranked 3<sup>rd</sup> in

### Cancer centre

Papers in oncology journals only

Memorial Sloan-Kettering

Mayo Clinic

**Princess Margaret Hospital**

Sidney Kimmel

University of Washington

M.D. Anderson

# tion perspective on fundraising

## Strategic Initiatives

PMHF has pioneered strategic initiatives like the *Shoppers Drug Mart Weekend to End Women's Cancers* and *The Enbridge Ride to Conquer Cancer*. Each of these events raises significant net fundraising revenue for PMHF and, importantly, for other like-minded cancer organizations across the country. The revenue, expenses and net return of each one of these events varies from year to year, but averages a 65% return to charity after expenses. PMHF outsources operations, logistics and administration of these programs to maintain flexibility as well as secure the expertise to execute these weekend events without taking on extensive full time staffing requirements. In the notes to our financial statements, there are full reports on these activities and their gross and net contributions to PMHF over the years.

## Effectiveness

In fiscal year 2011, The Princess Margaret Hospital Foundation was named one of the Top 10 Most Admired Cultures in Canada by the Waterstone Human Capital Group. This award is given for financial performance as well as the quality of human resource practices resulting in an outstanding culture. The staff of PMHF has diverse backgrounds from both the not-for-profit sector and the private sector. This combination of experiences, along with the fact that every member of the staff has a personal story and commitment to conquering cancer, means that our people are an important part of our overall effectiveness as an organization.

PMHF provided grants of \$54.3 million to support research, clinical and educational activities at The Princess Margaret during fiscal 2011. The funds raised by PMHF have supported the development of one of the top 5 cancer research centres in the world. This is a very powerful statement on the effectiveness of the funds raised and allocated by PMHF's excellent volunteer board over the last decade.

We have recently completed a review of our research impact versus other world leading cancer centres and are pleased to report we ranked 3rd amongst this group in percent of publications in high impact oncology journals (see chart bottom of page). In terms of effectiveness in the use of funds, the chart below illustrates the excellent research productivity at The Princess Margaret.

I hope the commentary has been enlightening and useful. We take the stewardship of the money raised for the Princess Margaret Hospital very seriously and we remain very appreciative of your support.

Sincerely,



Paul Alofs  
President & CEO

## the Publication of Research Discoveries

# of papers (07-09)	Cites (April 2011)	Cites per paper	% Cited	% Highly cited	% in High-impact journals
1,366	22,911	16.8	93.8%	37.8%	17.1%
928	15,598	16.8	93.5%	41.7%	14.9%
<b>769</b>	<b>11,747</b>	<b>15.3</b>	<b>93.1%</b>	<b>32.8%</b>	<b>13.4%</b>
1,142	17,682	15.5	94.3%	37.0%	13.0%
691	9,705	14.0	94.6%	28.2%	12.2%
3,036	43,790	14.4	94.2%	36.2%	10.7%

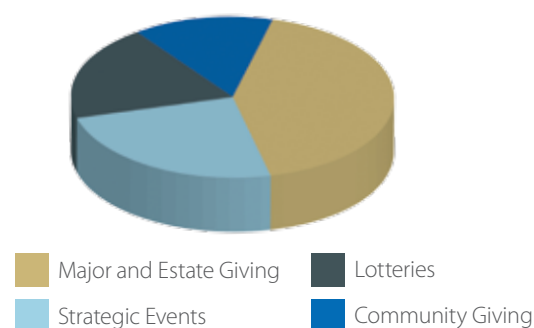


# The Princess Margaret Hospital Foundation

## Statement of revenue, expenses and changes in fund balances (in \$ thousands)

Year ended March 31	2007	2008	2009	2010	2011
Gross fundraising revenue	58,274	61,678	72,804	70,530	75,368
Direct fundraising expenses <sup>1</sup>	(8,543)	(8,902)	(15,241)	(12,308)	(13,274)
<b>Net fundraising revenue</b>	<b>49,731</b>	<b>52,776</b>	<b>57,563</b>	<b>58,222</b>	<b>62,094</b>
Direct fundraising expenses / gross fundraising revenue	14.7%	14.4%	20.9%	17.5%	17.6%
Gross lottery revenue	70,613	66,632	56,897	50,206	52,210
Direct lottery expenses <sup>2</sup>	(55,343)	(52,918)	(41,310)	(38,457)	(37,060)
Net lottery revenue	15,270	13,714	15,587	11,749	15,150
<b>Net fundraising and lottery revenue</b>	<b>65,001</b>	<b>66,490</b>	<b>73,150</b>	<b>69,971</b>	<b>77,244</b>
Investment income (loss)	9,950	6,472	(18,467)	43,658	22,790
<b>Net revenue, including investment income (loss)</b>	<b>74,951</b>	<b>72,962</b>	<b>54,683</b>	<b>113,629</b>	<b>100,034</b>
General fundraising and administrative expenses <sup>3</sup>	6,501	6,691	7,292	6,744	7,670
General fundraising and administrative expenses / Net fundraising and lottery revenue (excluding investment income (loss))	10.0%	10.1%	10.0%	9.6%	9.9%
<b>Excess of revenue over expenses before grants</b>	<b>68,450</b>	<b>66,271</b>	<b>47,391</b>	<b>106,885</b>	<b>92,364</b>
Grants to Ontario Cancer Institute/Princess Margaret Hospital					
Building	2,500	3,514	2,789	1,514	2,830
Research	43,942	47,439	50,365	46,763	48,302
Education	700	700	700	700	700
Equipment	7,373	2,984	8,250	4,841	2,490
	54,515	54,637	62,104	53,818	54,322
<b>Excess (deficiency) of revenue over expenses and grants</b>	<b>13,935</b>	<b>11,634</b>	<b>(14,714)</b>	<b>53,067</b>	<b>38,042</b>
<b>Fund Balances</b>					
Endowments	107,508	109,118	89,582	108,652	117,701
Restricted	125,800	133,945	137,746	165,769	194,788
Unrestricted	1,286	3,165	4,187	10,161	10,135
	234,594	246,228	231,515	284,582	322,624
Held By University of Toronto	14,057	13,415	9,222	10,330	11,085
Total Capital	248,651	259,643	240,737	294,912	333,709

### Where our Revenue Comes From



### Notes

1 Direct fundraising expenses represent costs for logistics, marketing and other expenses directly related to fundraising activities including those for our major events such as *The Enbridge Ride to Conquer Cancer*, *Shoppers Drug Mart Weekend to End Women's Cancers* and our Direct Marketing programs.

2 The net proceeds of lotteries are a critical source of research funding for PMH/OCI. The direct lottery expenses of prizes, marketing, logistics and other costs are funded through ticket sales. Lotteries are operated under provincial licenses, and lottery ticket buyers do not receive a tax receipt.

3 General fundraising and administrative expenses are the overhead costs associated with running the Foundation operations.

# The Princess Margaret Hospital Foundation

(as of March 31, 2011)

## Board of Directors

Keith P. Ambachtsheer – Chairman  
(retired September 29, 2010)  
John H. Bowey, FCA – Chairman  
(appointed September 29, 2010)  
Lloyd Atkinson  
Stephen Bear  
Dr. Robert Bell  
Dr. Charles Chan  
Tom Ehrlich  
Stephen M. Goldhar  
Dr. Mary Gospodarowicz  
David P. Harris  
Marianne Harris  
Candace Innes  
Glenn Ives  
Chris Jordan  
Nizar E. Kanji  
Farsad Kiani  
Maureen Shaughnessy Kitts  
Kevin Lynch  
Karen Maidment  
Dr. Benjamin Neel  
Dr. Christopher J. Paige  
Wendy C. Posluns  
Larry Rosen  
Jürgen Schreiber  
David S. Weiss  
Betsy Wright

## Officers

Paul Alofs  
President & CEO  
  
Asha Raheja  
Treasurer  
  
Margo C. Clarke  
Secretary

## Board Committees

### *Audit and Accountability*

Chair: Glenn Ives  
Members  
Lloyd Atkinson  
John H. Bowey  
Nizar E. Kanji  
Larry Rosen

### *Governance*

Chair: Nizar E. Kanji  
Members  
Stephen Bear  
John H. Bowey  
Dr. Charles Chan  
Farsad Kiani  
Wendy Posluns  
Betsy Wright

### *Granting, Stewardship and Impact*

Chair: Tom Ehrlich  
Members  
Keith P. Ambachtsheer  
Stephen Bear  
John H. Bowey  
Dr. Mary Gospodarowicz  
Kevin Lynch  
Dr. Benjamin Neel  
Dr. Christopher J. Paige  
Wendy Posluns  
Maureen Shaughnessy Kitts

### *Human Resources and Compensation*

Chair: David P. Harris  
Members  
Stephen Bear  
Dr. Robert Bell  
John H. Bowey  
Glenn Ives

### *Investment*

Chair: Marianne Harris  
Members  
Lloyd Atkinson  
John H. Bowey  
Stephen M. Goldhar  
Karen Maidment

## President & CEO's Advisory Committees

### *Lottery*

Chair: Candace Innes  
Members  
Paul Alofs  
Chris Jordan  
Christine Lasky  
Maureen Shaughnessy Kitts

**Design:** Y&R

**Photography:** michael t photography & design inc., Angela Lewis

**Production:** Corporate Graphics Department, University Health Network

**Printing:** Belbin & Associates



The Princess Margaret

One of the top 5 cancer research centres in the world



Our Vision

Conquer Cancer In Our Lifetime

Our Cause

The Patient

Our Partner

The Princess Margaret Cancer Centre

Our Donors

Lead The Way

Office/Courier Address:

700 University Avenue, 10th Floor, Toronto, ON M5G 1Z5

Mailing Address:

610 University Avenue, Toronto, ON M5G 2M9

T: 416.946.6560 1.866.224.6560 F: 416.946.6563 [www.pmfh.ca](http://www.pmfh.ca)

Charitable Organization No. 88900 7597 RR0001



The Princess Margaret  
Hospital Foundation

University Health Network